

SERVICE PROCEDURE

REFERENCE: FSA 202321

DATE: 23.01.2024

SUBJECT: CHASSIS ROD ISSUES

FSA TYPE: CUSTOMER NOTIFICATION

Introduction

Please follow procedures which are required for replacement of steering pitman system.

FSA 202321A

Service Implementation:

(See remove/Install instruction-01 and use defined torque values)

| Labour Code | Labour Name | Time |
|-------------|------------------------------------------------------|---------|
| SSR202321A | Steering System Replacement Pack-1 + Wheel Alignment | 1,41 hr |

* Wheel alignment includes in labour time

Service Parts

| Part No | Additional Labour | Part Name | Quantity |
|--------------|-----------------------------------------|--------------------------------|----------|
| RC46-3304-CA | Wheel Alignment | Link Steering Drag - Short | 1 |
| MC46-3146-FB | Wheel Alignment | Arm Steering Spindle Drag Link | 1 |
| SDM M2G1 A | 1 of them will be used for 100 vehicles | LOCTITE 290 | - |

FSA 202321B

Service Implementation:

(See remove/Install instruction-01/02/04/05 and use defined torque values)

(Ehpas calibration has to be done after wheel alignment if ehpas includes)

| Labour Code | Labour Name | Time |
|-------------|------------------------------------------------------|---------|
| SSR202321B | Steering System Replacement Pack-3 + Wheel Alignment | 3,75 hr |

* Wheel alignment includes in labour time

Service Parts

| Part No | Additional Labour | Part Name | Quantity |
|-----------------|-----------------------------------------|---------------------------------------|----------|
| RC46-3304-CA | Wheel Alignment | Link Steering Drag - Short | 1 |
| MC46-3146-FB | Wheel Alignment | Arm Steering Spindle Drag Link | 2 |
| RC46-3305-DA | Wheel Alignment | Link Steering Drag - Short | 1 |
| MC46-3305-BD | Wheel Alignment | Link Steering Drag - Long | 1 |
| RC46-16105-EA | Wheel Alignment | Fender Assembly Front Inner Left Hand | 1 |
| PGC46-16K040-GA | Wheel Alignment | Bracket-Fender | 1 |
| SDM M2G1 A | 1 of them will be used for 100 vehicles | LOCTITE 290 | - |

SERVICE PROCEDURE

REFERENCE: FSA 202321

DATE: 23.01.2024

SUBJECT: CHASSIS ROD ISSUES

FSA TYPE: CUSTOMER NOTIFICATION

FSA 202321C

Service Implementation:

(See remove/Install instruction-01/02/04/05 and use defined torque values)

(Ehpa calibration has to be done after wheel alignment if ehpa includes)

| Labour Code | Labour Name | Time |
|-------------|------------------------------------------------------|---------|
| SSR202321C | Steering System Replacement Pack-4 + Wheel Alignment | 3,91 hr |

* Wheel alignment includes in labour time

Service Parts

| Part No | Additional Labour | Part Name | Quantity |
|-----------------|-----------------------------------------|---------------------------------------|----------|
| RC46-3304-CA | Wheel Alignment + SAS Calibration | Link Steering Drag - Short | 1 |
| MC46-3146-FB | Wheel Alignment + SAS Calibration | Arm Steering Spindle Drag Link | 2 |
| RC46-3305-DA | Wheel Alignment + SAS Calibration | Link Steering Drag - Short | 1 |
| MC46-3305-BD | Wheel Alignment + SAS Calibration | Link Steering Drag - Long | 1 |
| RC46-16105-EA | Wheel Alignment + SAS Calibration | Fender Assembly Front Inner Left Hand | 1 |
| PGC46-16K040-GA | Wheel Alignment + SAS Calibration | Bracket-Fender | 1 |
| SDM M2G1 A | 1 of them will be used for 100 vehicles | LOCTITE 290 | - |

FSA 202321D

Service Implementation:

(See remove/Install instruction-03/04/05 and use defined torque values)

(Ehpa calibration has to be done after wheel alignment if ehpa includes)

| Labour Code | Labour Name | Time |
|-------------|------------------------------------------------------|---------|
| SSR202321D | Steering System Replacement Pack-5 + Wheel Alignment | 3,00 hr |

* Wheel alignment includes in labour time

Service Parts

| Part No | Additional Labour | Part Name | Quantity |
|-----------------|-----------------------------------------|---------------------------------------|----------|
| MC46-3305-CB | Wheel Alignment | Link Steering Drag 2.Axle | 1 |
| MC46-3305-BD | Wheel Alignment | Link Steering Drag - Long | 1 |
| PGC46-16K040-GA | Wheel Alignment | Bracket-Rear Fender | 1 |
| RC46-16105-EA | Wheel Alignment | Fender Assembly Front Inner Left Hand | 1 |
| SDM M2G1 A | 1 of them will be used for 100 vehicles | LOCTITE 290 | - |

SERVICE PROCEDURE

REFERENCE: FSA 202321

DATE: 23.01.2024

SUBJECT: CHASSIS ROD ISSUES

FSA TYPE: CUSTOMER NOTIFICATION

FSA 202321E

Service Implementation:

(See remove/Install instruction-03/04/05 and use defined torque values)
(Ehpas calibration has to be done after wheel alignment if ehpas includes)

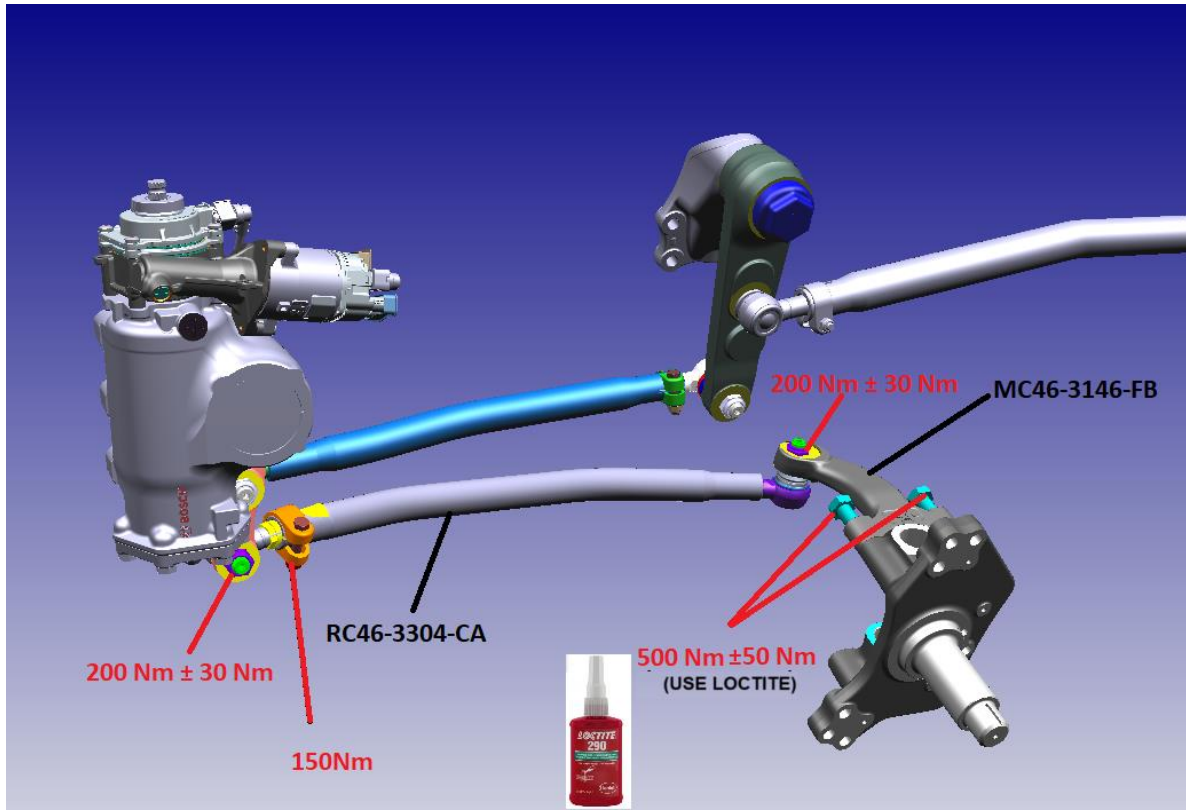
| Labour Code | Labour Name | Time |
|-------------|------------------------------------------------------|---------|
| SSR202321E | Steering System Replacement Pack-6 + Wheel Alignment | 3,00 hr |

* Wheel alignment includes in labour time

Service Parts

| Part No | Additional Labour | Part Name | Quantity |
|-----------------|-----------------------------------------|---------------------------------------|----------|
| MC46-3305-DB | Wheel Alignment | Link Steering Drag 2.Axle | 1 |
| MC46-3305-BD | Wheel Alignment | Link Steering Drag - Long | 1 |
| PGC46-16K040-GA | Wheel Alignment | Bracket-Fender | 1 |
| RC46-16105-EA | Wheel Alignment | Fender Assembly Front Inner Left Hand | 1 |
| SDM M2G1 A | 1 of them will be used for 100 vehicles | LOCTITE 290 | - |

Remove/Install instruction-01: RC46-3304-CA and MC46-3146-FB assembly



SERVICE PROCEDURE

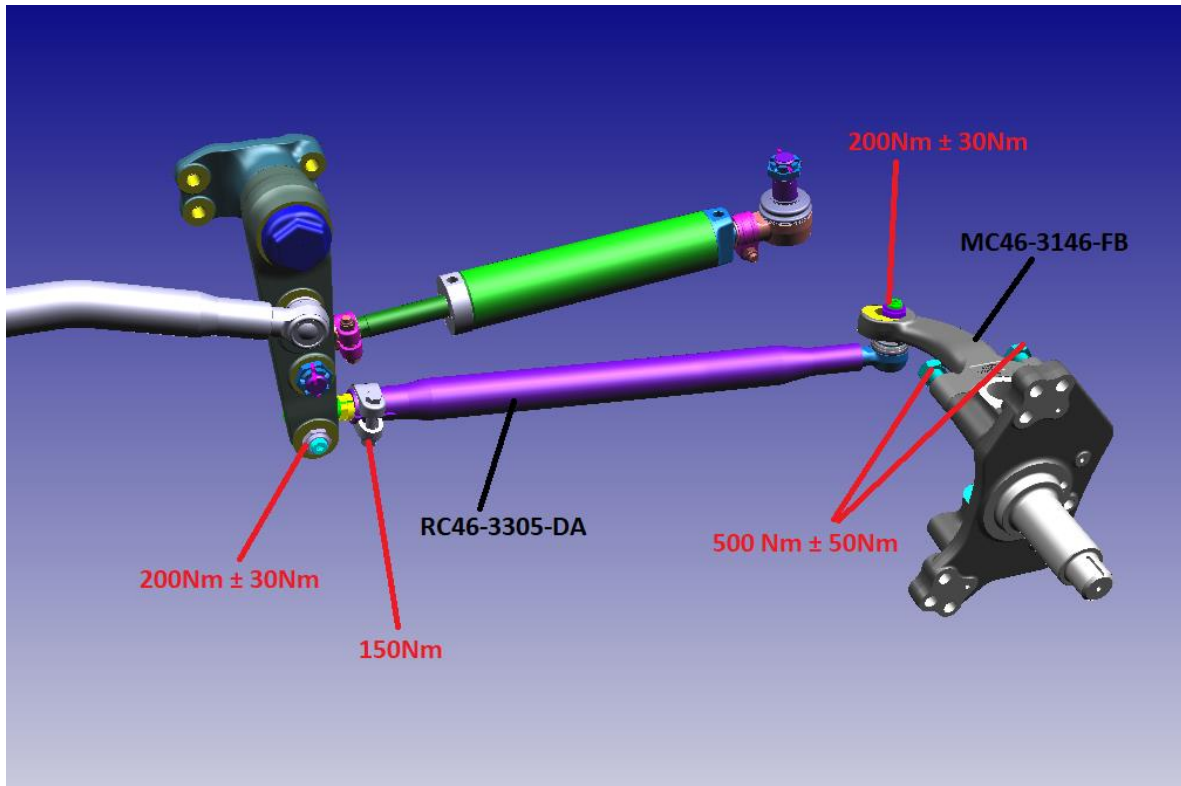
REFERENCE: FSA 202321

DATE: 23.01.2024

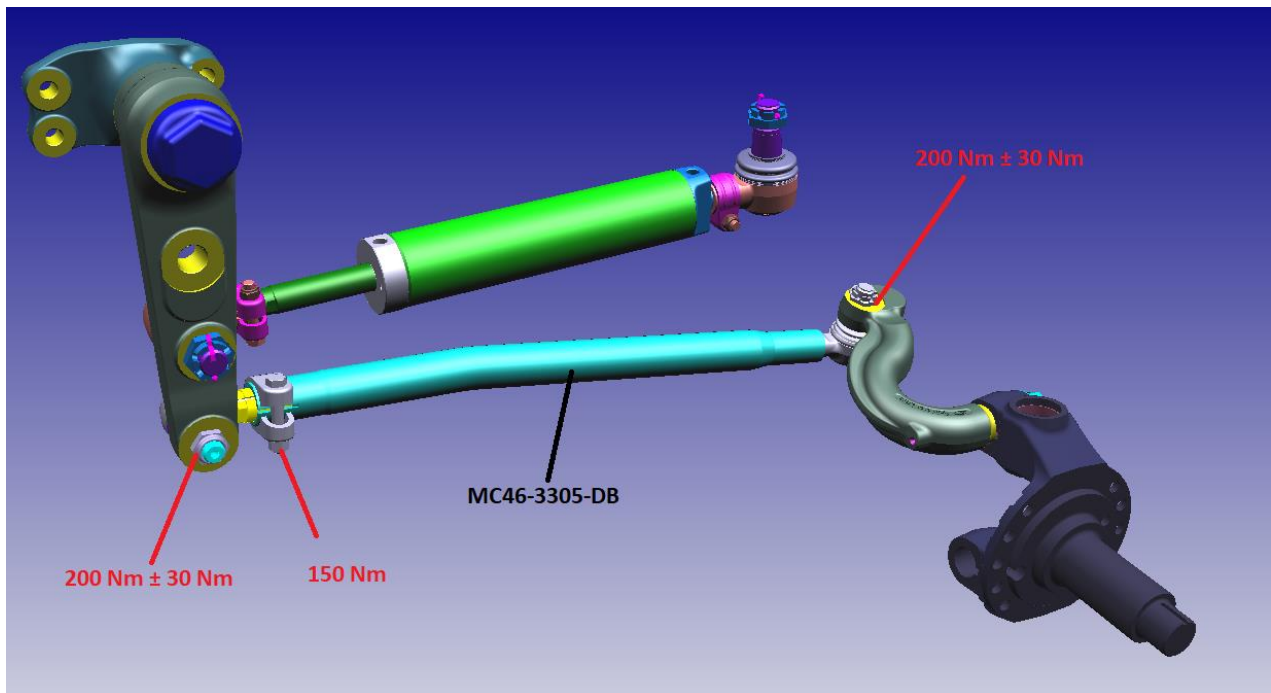
SUBJECT: CHASSIS ROD ISSUES

FSA TYPE: CUSTOMER NOTIFICATION

Remove/Install instruction-02: RC46-3304-DA and MC46-3146-FB assembly (Disc Brake)



Remove/Install instruction-03: MC46-3305-DB assembly (Drum Brake)



SERVICE PROCEDURE

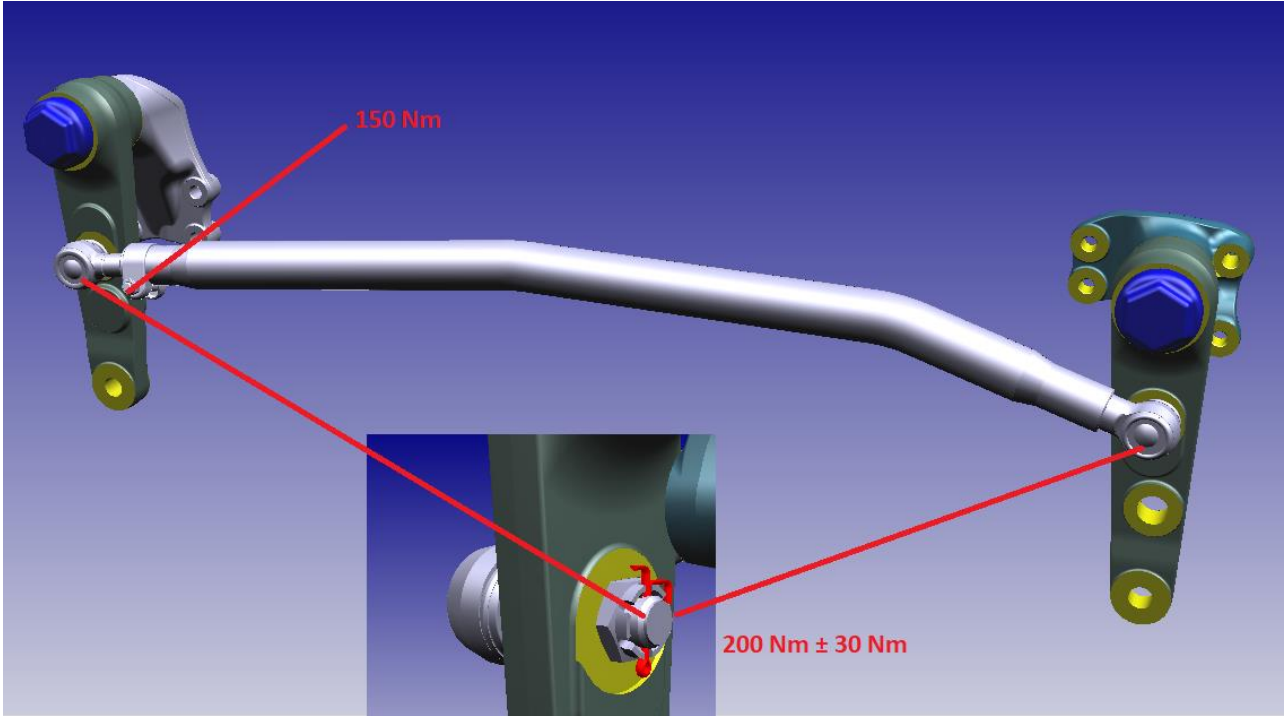
REFERENCE: FSA 202321

DATE: 23.01.2024

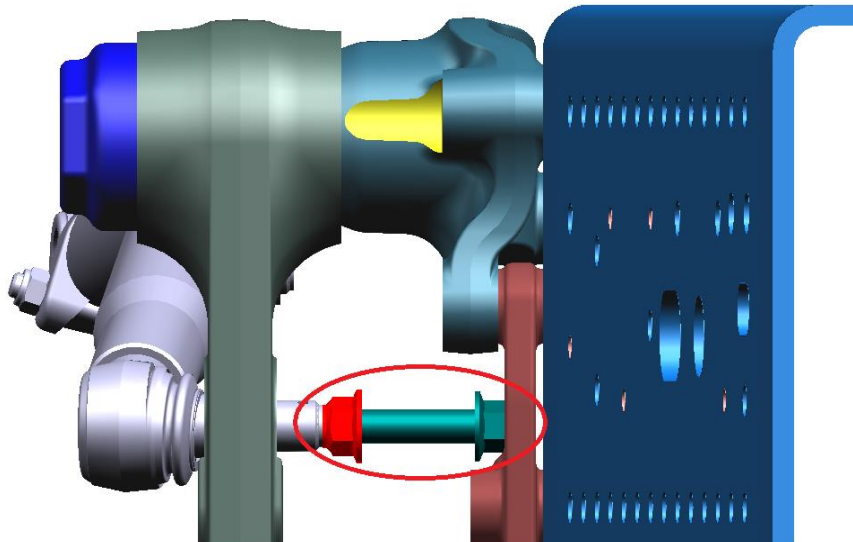
SUBJECT: CHASSIS ROD ISSUES

FSA TYPE: CUSTOMER NOTIFICATION

Remove/Install instruction-04: MC46-3305-BD assembly



Information: For removing the long rod, after joiner pin and the nut removals, if you insert 1 bolt and the nut to between rod head-chassis with assembly position as below picture and then trying to remove nut from bolt you will see rod's conical part will be removed from pitman, that means it allows you to remove the conical part of the rod from the pitman



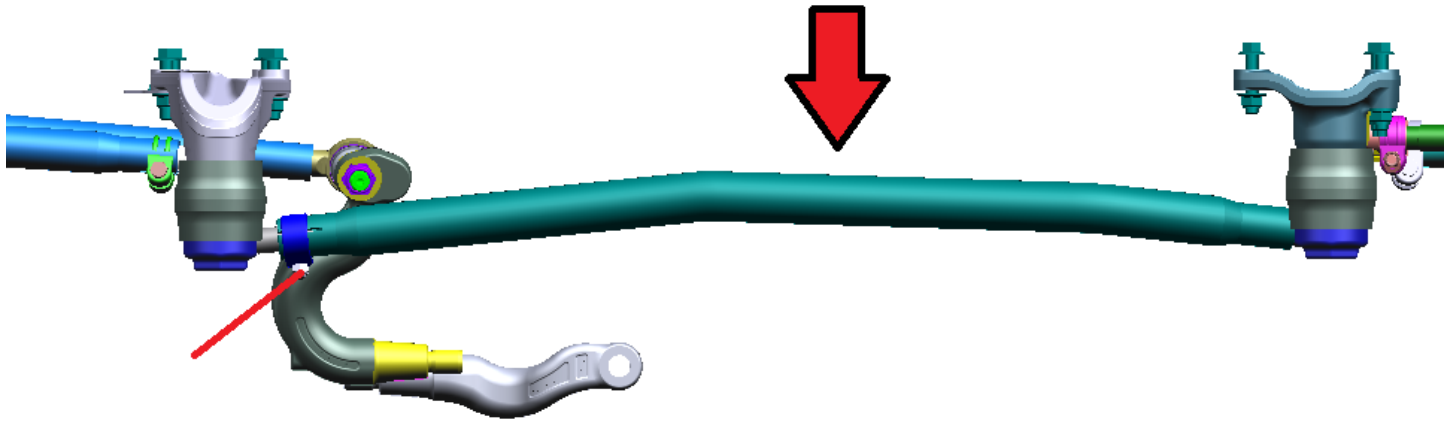
SERVICE PROCEDURE

REFERENCE: FSA 202321

DATE: 23.01.2024

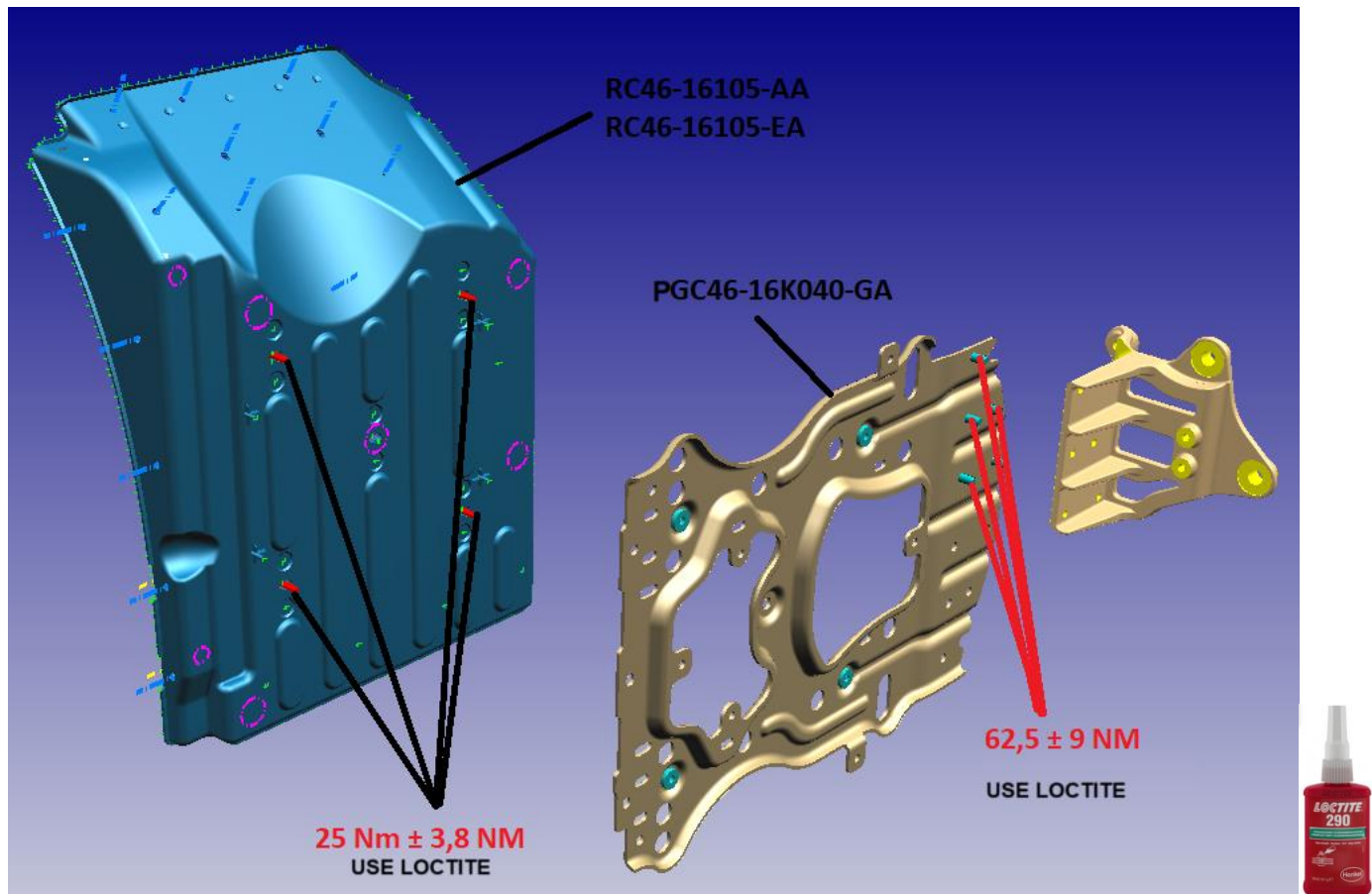
SUBJECT: CHASSIS ROD ISSUES

FSA TYPE: CUSTOMER NOTIFICATION



Long rod should be removed
when clamp is untightened

Remove/Install instruction-05: RC46-16105-EA, PGC46-16K040-GA



SERVICE PROCEDURE

REFERENCE: FSA 202321

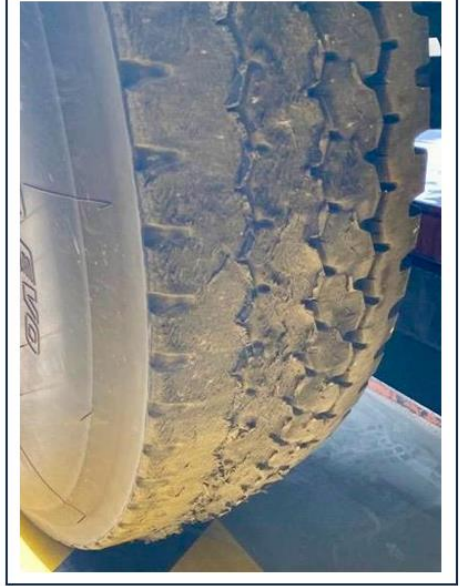
DATE: 23.01.2024

SUBJECT: CHASSIS ROD ISSUES

FSA TYPE: CUSTOMER NOTIFICATION

!!!When you received a request that changing tire, categorize tire wear type and apply service engineering.

1)Ladder type wear



Ladder Type Wear

2)Edge type wear



Edge Type Wear

SERVICE PROCEDURE

REFERENCE: FSA 202321

DATE: 23.01.2024

SUBJECT: CHASSIS ROD ISSUES

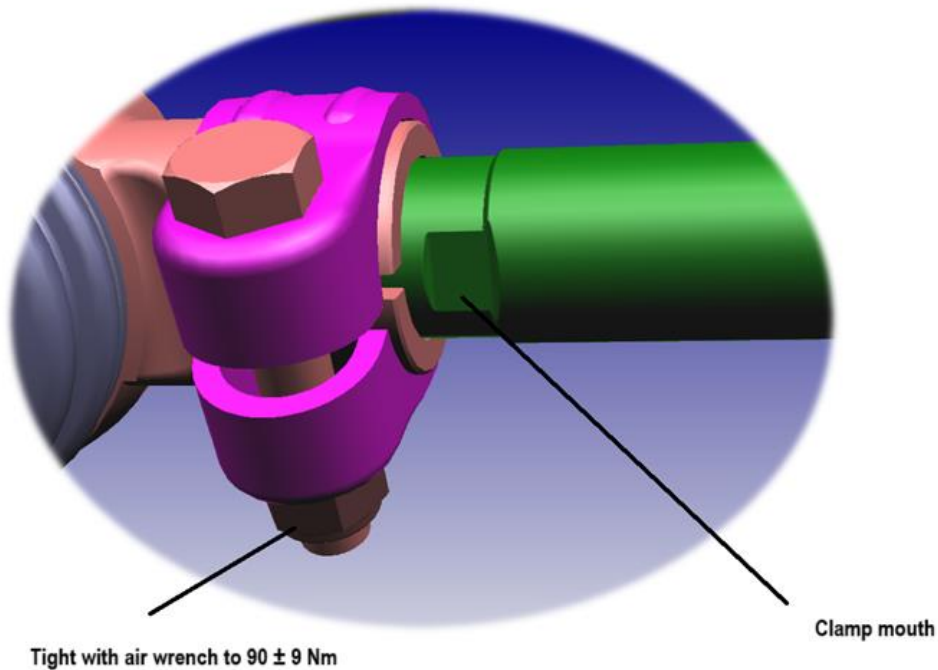
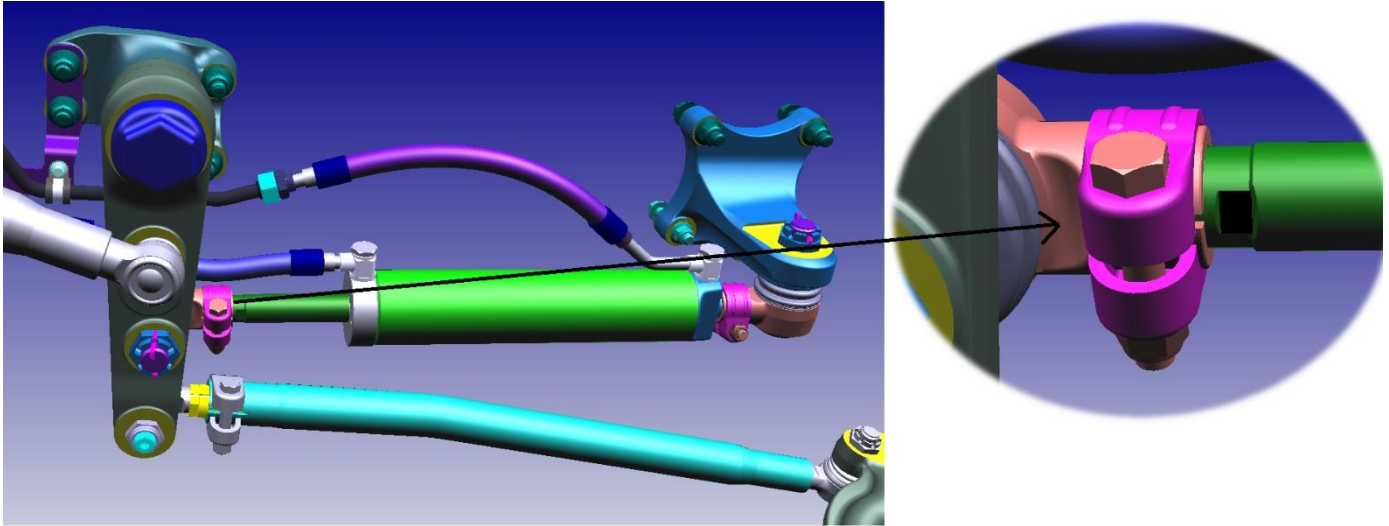
FSA TYPE: CUSTOMER NOTIFICATION

Hydraulic Cylinder Rod Head Gap Control (LC46-3A540-AB) :

Rod head opening of the hydraulic cylinder distance should be a maximum of 2 threads from the wrench side. If there is improper gap (more than 2 threads) it has to be fixed before than wheel alignment process.

Instruction of Improper Hydraulic Cylinder Rod Head For 8x4 Vehicles :

- This process should be done before than wheel alignment process
- Open clamp nut (M14) without removing rod from place
- Rotate and push inner rod (threads) to hydraulic cylinder rod till 2 threads remain. (Use wrench when adjusting rod position)
- Fix clamp with 90Nm torque.
- Then start wheel alignment process.



SERVICE PROCEDURE

REFERENCE: FSA 202321

DATE: 23.01.2024

SUBJECT: CHASSIS ROD ISSUES

FSA TYPE: CUSTOMER NOTIFICATION

Hydraulic Cylinder Rod Head Gap Samples For 8x4 Vehicles :



Best regards

Ford Trucks Service Engineering