

SERVICE INSTRUCTIONS

REFERENCE: FSA202211

DATE: 13.09.2022

SUBJECT: Clutch Master Cylinder Replacement

FSA TYPE: Customer Notification

Introduction

FSA202211: Clutch master cylinder and oil will be replaced in LEGACY (2016MY) vehicles.

Labour:

Labour	Labour Name	Duration
22C105 A	CLUTCH MASTER CYLINDER AND OIL REPLACEMENT	0,75 h

Parts:

Part Number	Part Description	Usage
WSS M6C65 500ML	Brake Fluid	1 (500ml.)
GC46 7A543 AE	Clutch Master Cylinder	1

Service Application

In Legacy (2016MY) vehicles, the clutch master cylinder and clutch fluid of the vehicles within the specified VIN range should be replaced.

1. First of all, in order to perform the replacement, the areas where the oil may come into contact with the vehicle should be protected with a cloth and a derivative material since clutch fluid is a corrosive oil.



Image 1 - The areas on the vehicle where oil can spill should be covered with a cloth

SERVICE INSTRUCTIONS

REFERENCE: FSA202211

DATE: 13.09.2022

SUBJECT: Clutch Master Cylinder Replacement

FSA TYPE: Customer Notification

2. Start the process by loosening the clutch master cylinder hydraulic pipe.



Image 2 - Clutch master cylinder hydraulic pipe

3. After loosening the hose, remove the clutch master cylinder bolts and pull the clutch master cylinder



Image 3 - Clutch master cylinder bolts



Image 4 - Clutch master cylinder bolts

SERVICE INSTRUCTIONS

REFERENCE: FSA202211

DATE: 13.09.2022

SUBJECT: Clutch Master Cylinder Replacement

FSA TYPE: Customer Notification

4. After the clutch master cylinder is removed from the vehicle, the oil remaining in the reservoir should be poured into the waste container.



Image 5 - Waste oil

5. Since you already loosened the hydraulic hose while on the vehicle, the hydraulic hose is loosened by hand, the hydraulic hose and the clutch master cylinder are disconnected and the clutch master cylinder is separated.



Image 6 - Hydraulic hose and clutch master cylinder connection

SERVICE INSTRUCTIONS

REFERENCE: FSA202211

DATE: 13.09.2022

SUBJECT: Clutch Master Cylinder Replacement

FSA TYPE: Customer Notification

Important Note 1: Do not forget to remove the plug of the supplied new clutch master cylinder



Image 7 - Clutch master cylinder plug

6. The clutch master cylinder, whose plug is removed, should be connected to the hose connector without being connected to the vehicle, and pre-tightening should be done by turning it by hand.

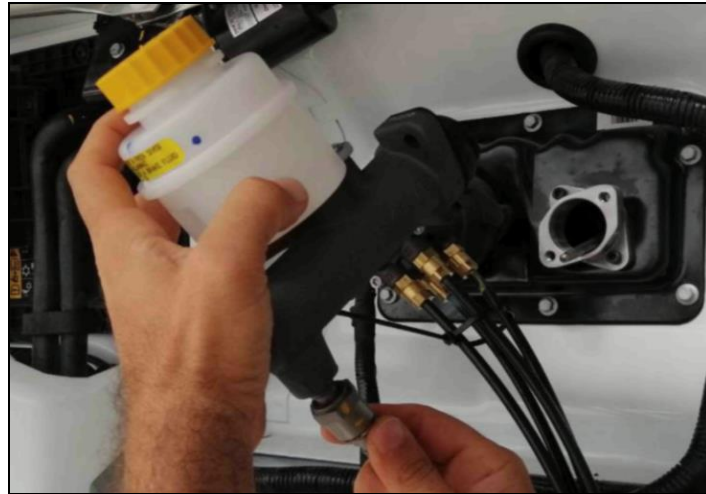


Image 8 - Hose connector

Important Note 2: The clutch master cylinder can be connected to the vehicle after pre-tightening process of the hose. Care should be taken not to tear the bellows while inserting the push rod into the bellows.

SERVICE INSTRUCTIONS

REFERENCE: FSA202211

DATE: 13.09.2022

SUBJECT: Clutch Master Cylinder Replacement

FSA TYPE: Customer Notification

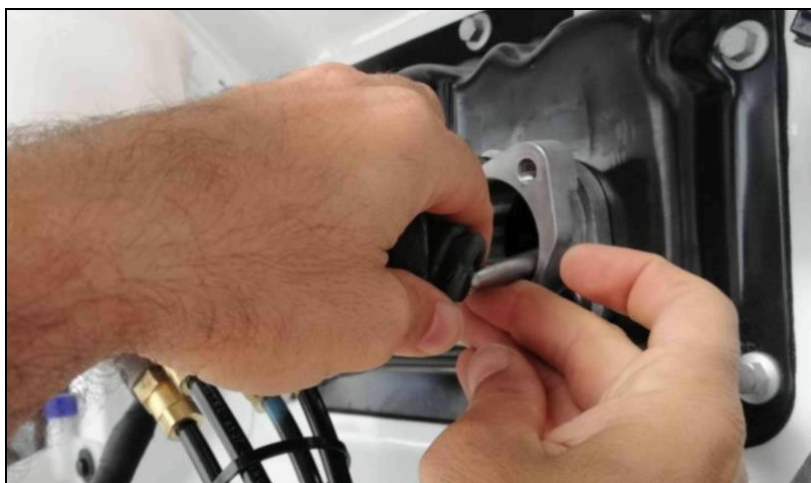


Image 9 - Push rod in the bellow

7. After the rod is inserted in the bellows, the clutch master cylinder bolt should be attached by hand and the clutch must be pressed **5 times** to ensure that it is placed inside the bellows. It should be visually checked that the bellows is fully fixed after pressing the clutch. If the clutch is not pressed, the bellows may jam and be damaged. Afterwards, the clutch master cylinder connections should be tightened with **23 Nm** and the assembly should be done.



Image 10 - Visual check of bellow

SERVICE INSTRUCTIONS

REFERENCE: FSA202211

DATE: 13.09.2022

SUBJECT: Clutch Master Cylinder Replacement

FSA TYPE: Customer Notification

8. The hose connector, which we pre-tightened before, should be tightened with a torque of **30 Nm** to complete the assembly.



Image 11 - Tightening hose connector

9. After the completion of the assembly process, the clutch slave cylinder bleeding spigot should be loosened, **0.5 lt** of oil should be filled from the clutch master cylinder and the old oil in the system should be discharged. The clutch system should be deaerated after **0.5 lt** of oil is taken from the clutch slave cylinder. After the clutch system is deaerated, the clutch fork movement distance should be measured from the flywheel housing and it should be ensured that it is greater than **22 mm**.

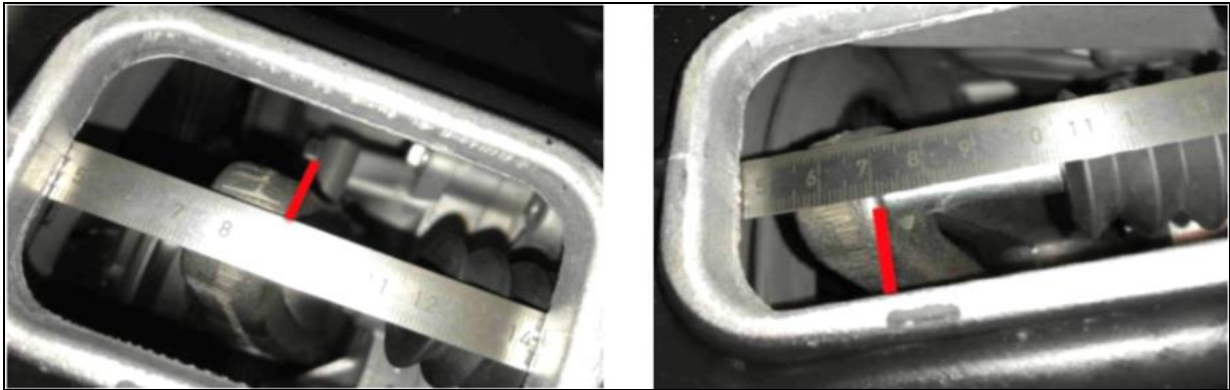


Image 12 - Clutch fork movement distance from the flywheel housing

Ford Trucks Service Engineering
Ford Otosan A.Ş