

*High Commercial Vehicles*

Publishing to	Service Manager	Warranty Manager	Spare Part Manager	Chief Technician	Service Consultant	BMIS
	✓	✓	✓	✓	✓	✓

<b>Subject</b>	Spoiler Assembly Instruction & Water Leakage Test
<b>Model</b>	H566MCA vehicles
<b>Summary</b>	Roof Spoiler assembly & water leakage control details in H566 MCA Vehicles

**Labour:**

Labour Code	Labour Name	Duration (hour)
43C035 T	Spoiler Installation & Water Test	1,5

**ASSEMBLY INSTRUCTION****1. Front Side of the Spoiler :**

- a. Create holes manually to the paint tapes (Figure 1 - no:4) for mounting of the silicon and bolts.
- b. Apply the silicon sealer on the paint tape as same size of sealer gaskets (Figure 1 no:3), also cover the holes created in “step a” with silicon.
- c. Put the sealer gaskets (yellow) on the silicon sealer.
- d. Put the bracket (blue) on sealer gaskets.
- e. Mount the bolts without torque operation at front side of spoiler for locating purpose.
- f. Mount the bolts without torque operation at rear side of spoiler spoiler for locating purpose.
- g. Torque front left side of the spoiler bolts. (Torque: 25+/-3,8)
- h. Torque front right side of the spoiler bolts. (Torque: 25+/-3,8)
- i. Torque rear left side of the spoiler bolts. (Torque: 25+/-3,8)
- j. Torque rear right side of the spoiler bolts. (Torque: 25+/-3,8)

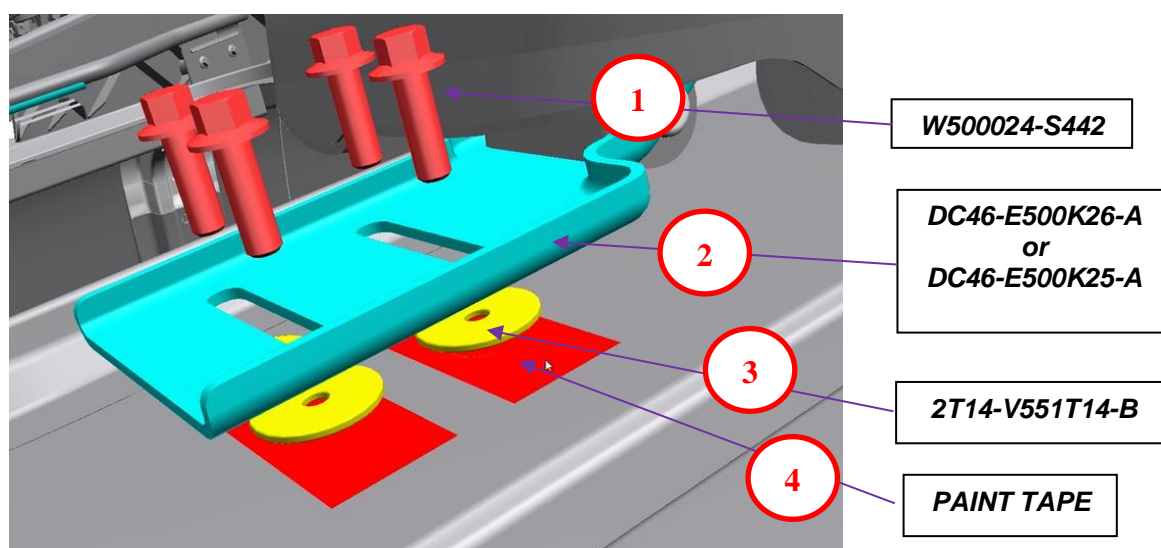
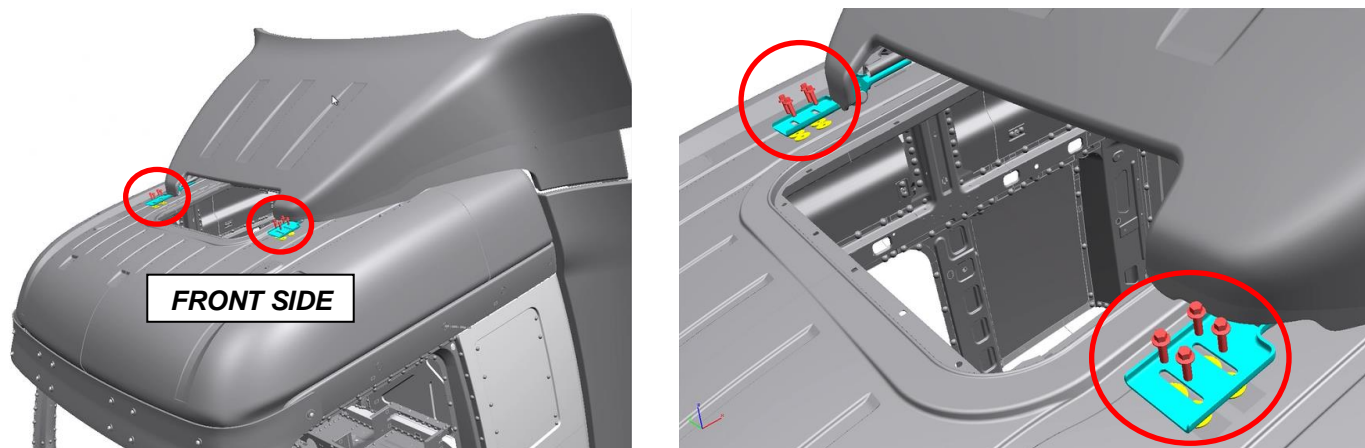


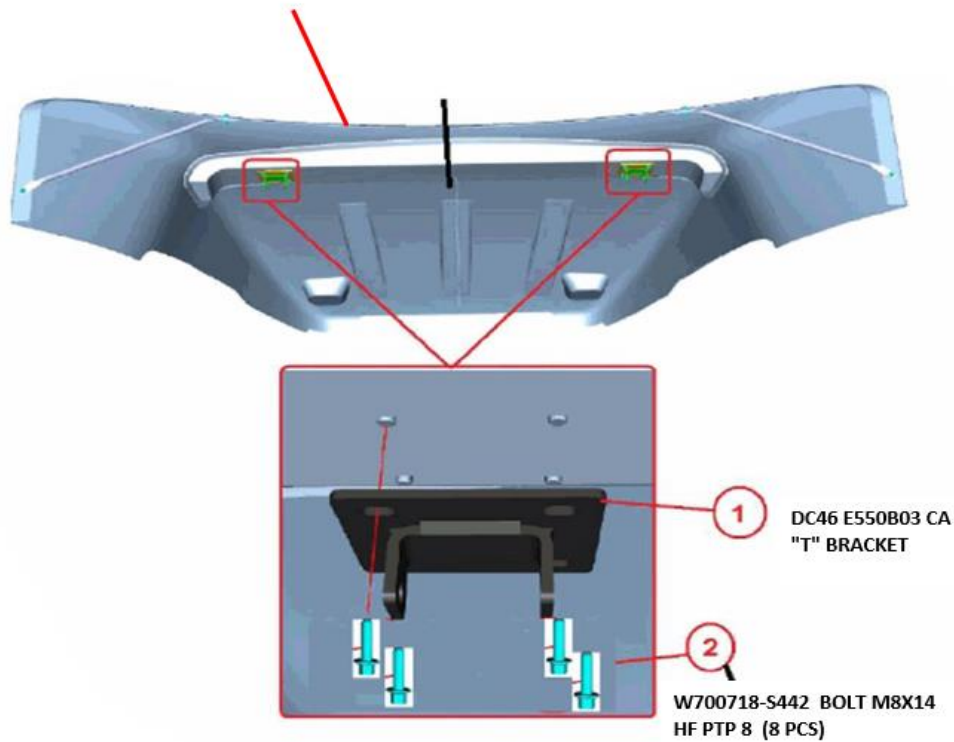
Figure 1

No	Part Number	Part Name	Qty
1	W500024-S442	BOLT M8X25 HF 8	8
2	DC46-E500K26-A	Left Bracket	1
2	DC46-E500K25-A	Right Bracket	1
3	2T14-V551T14-B	Sealing Gasket	8

## 2. Rear Side of Spoiler :

- a. Mount identified bolts to T bracket and spoiler for each side (left & right) Torque: 17,5 +/-2,7 Nm (Figure 2)

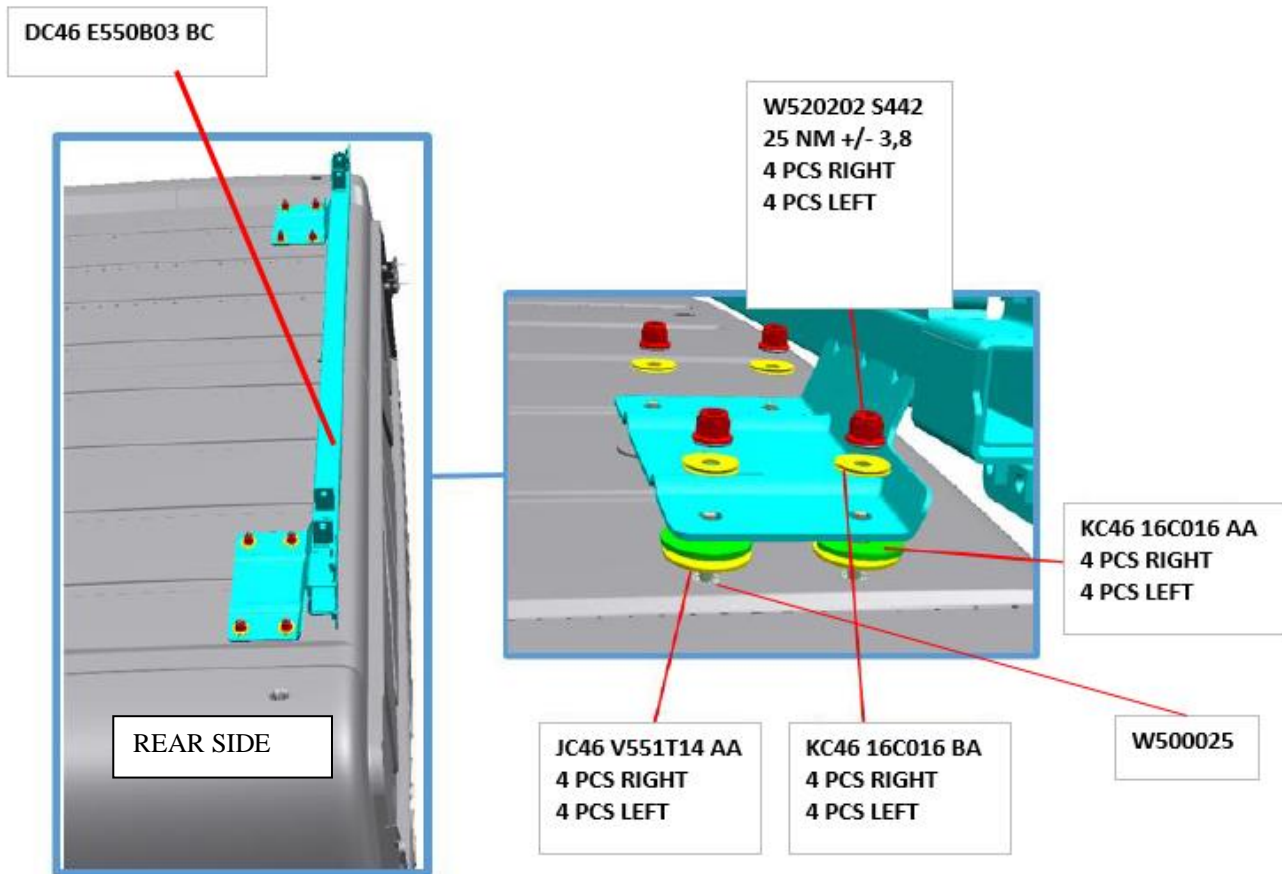
PEC46 E500A26 ABW or PGC46 E500A26 AAW-  
UPPER SPOILER



**Figure 2**

No	Part Number	Part Name	Qty	Option info
1	DC46 E550B03 CA	T Bracket	2	
2	W 700718 S442	BOLT M8X14 HF PTP 8	8	
3	PEC46 E500A26 ABW	Upper Spoiler	1	horizontal exhaust
4	PGC46 E500A26 AAW	Upper Spoiler	1	vertical exhaust

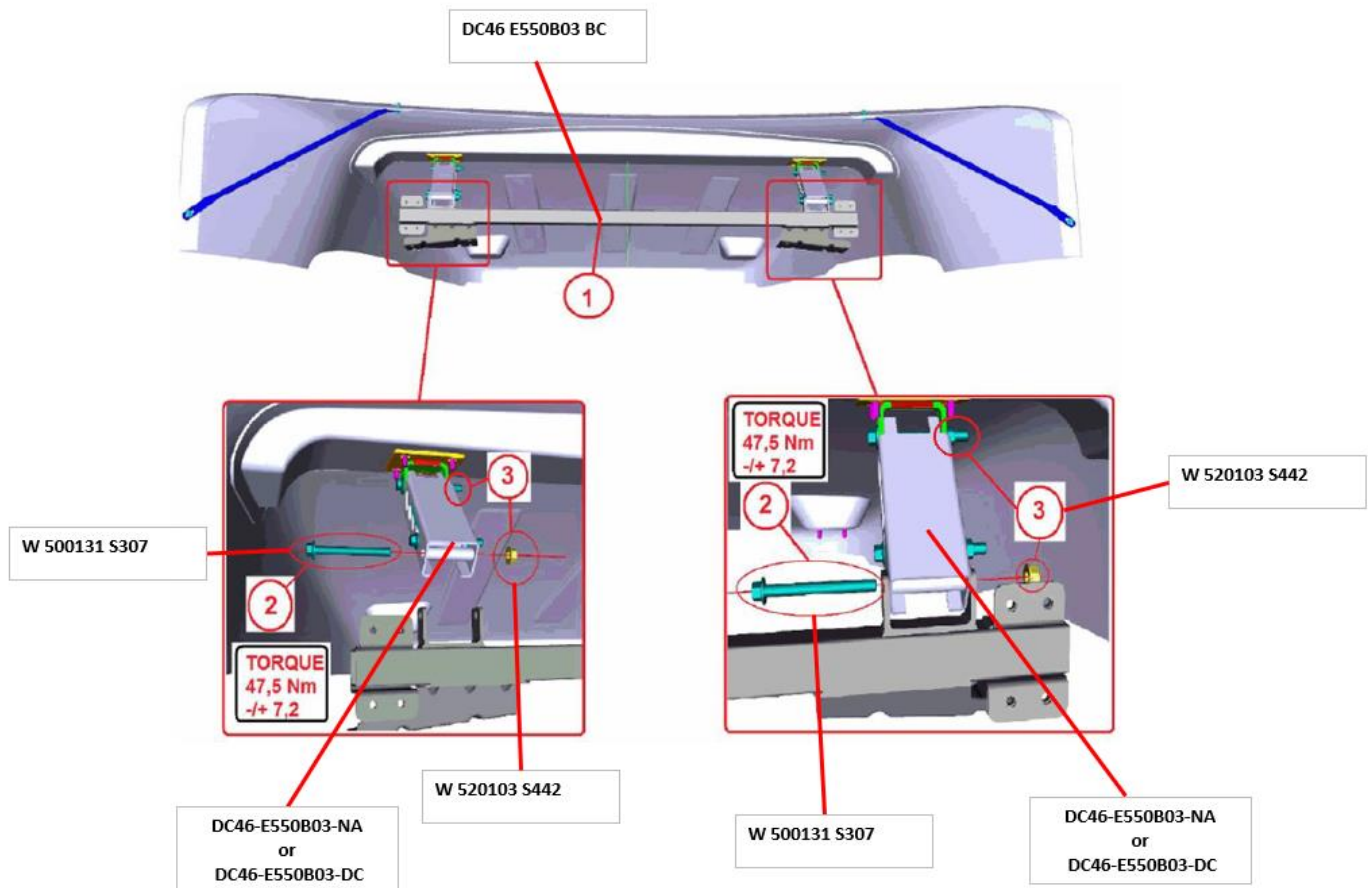
- b.** Mount the identified bolts with Sealer Gasket (yellow), washer (green), washer (yellow), Nut (Red) to Main Bracket and Body Roof. Torque: 25 NM +/- 3,8 (Figure 3)



**Figure 3**

No	Part Number	Part Name	Qty
1	DC46 E550B03 BC	Main Bracket	1
2	W 520202 S440	NUT M8 HF PTP 8	8
3	JC46 V551T14 AA	Sealer Gasket	8
4	KC46 16C016 BA	washer	8
5	KC46 16C016 AA	washer	8
6	W500025	BOLT M8X30 HF 8	8

- c. Mount Bolt and Nut to Telescope Bracket and Spoiler Main Bracket. Torque : 47,5 Nm +/-7,2 (Figure 4)

**Figure 4**

No	Part Number	Part Name	Qty
1	DC46-E550B03-BC	Spoiler Main Bracket	1
2	W 500131 S307	BOLT M10X95 HF 8	4
3	W 520103 S442	NUT M10 HF PTM 8	4
4	DC46-E550B03-NA	Telescope Bracket(others)	2
5	DC46-E550B03-DC	Telescope Bracket(low liner)	2

### WATER LEAKAGE TEST

Test the connection areas with pressure washer which capable to spray water between 2.5 - 3 bar. Ensure water applied by nozzles with pressure in 85/90-degree angle to entire surface of the vehicle cabin. Minimum 10 minutes test duration is required. Technicians must check inside of the vehicle cabin visually to ensure there is leakage. Corners, glasses, roof, areas which are close to Body Exterior fastener points must be checked carefully.

Regards,  
Ford Trucks Service Engineering  
Ford Otomotiv San. A.Ş