

Heavy Commercial Vehicles

Information bulletin to be circulated to:	Service Manager	Warranty Manager	Parts Manager	Master Technician	Service Consultant	BMIS
	✓	✓	✓	✓	✓	✓

Subject	Dry Type Heater Cleaning Process
Model	In All Ford Trucks Vehicles
Summary	The following cleaning method should be applied to all Ford Trucks vehicles that come with a soot-induced backup heater not working problem.

Labour

Labor Code	Work Name	Duration
34C017 A	Dry Type Cab Heater Revision	1,4 h

Service Application

The Heater not working or the problem of white smoke coming out of the exhaust from the heater while it is running (**Image 1**) , the following control method should be applied, and the combustion chamber should be cleaned if necessary. Before the repair, the maintenance menu → error codes → should be read from the cluster in Fmax vehicles (**Image 2**). In Legacy Vehicles, the error code will be read on its own control screen(timer) (**Image 3**). On the start screen, move over the setting symbol with the arrow keys and press the lower right button. After going to the setting menu, press the lower left button for 5 seconds. The error code is displayed on the screen numbered



Image 1 - White smoke coming out of the heater exhaust.



Image 2 - Fmax error code reading



Image 3 - Legacy error code reading

Steps to be followed when disassembling the heater:

- 1) Remove the plastic gasket and protective caps.



- 2) Remove the control box. If the combustion chamber is sooty, it may be caused by glow plug (error code 20, 21, 22) or fan (error code 31,32,33,34). Do the checks corresponding to the error codes, replace the spark plug or fan if necessary.



3) Remove the Combustion Chamber.



- 4) If the gasket which number is GC 46 18C264 AA in the image is damaged while removing the combustion chamber, replace it with a new one.



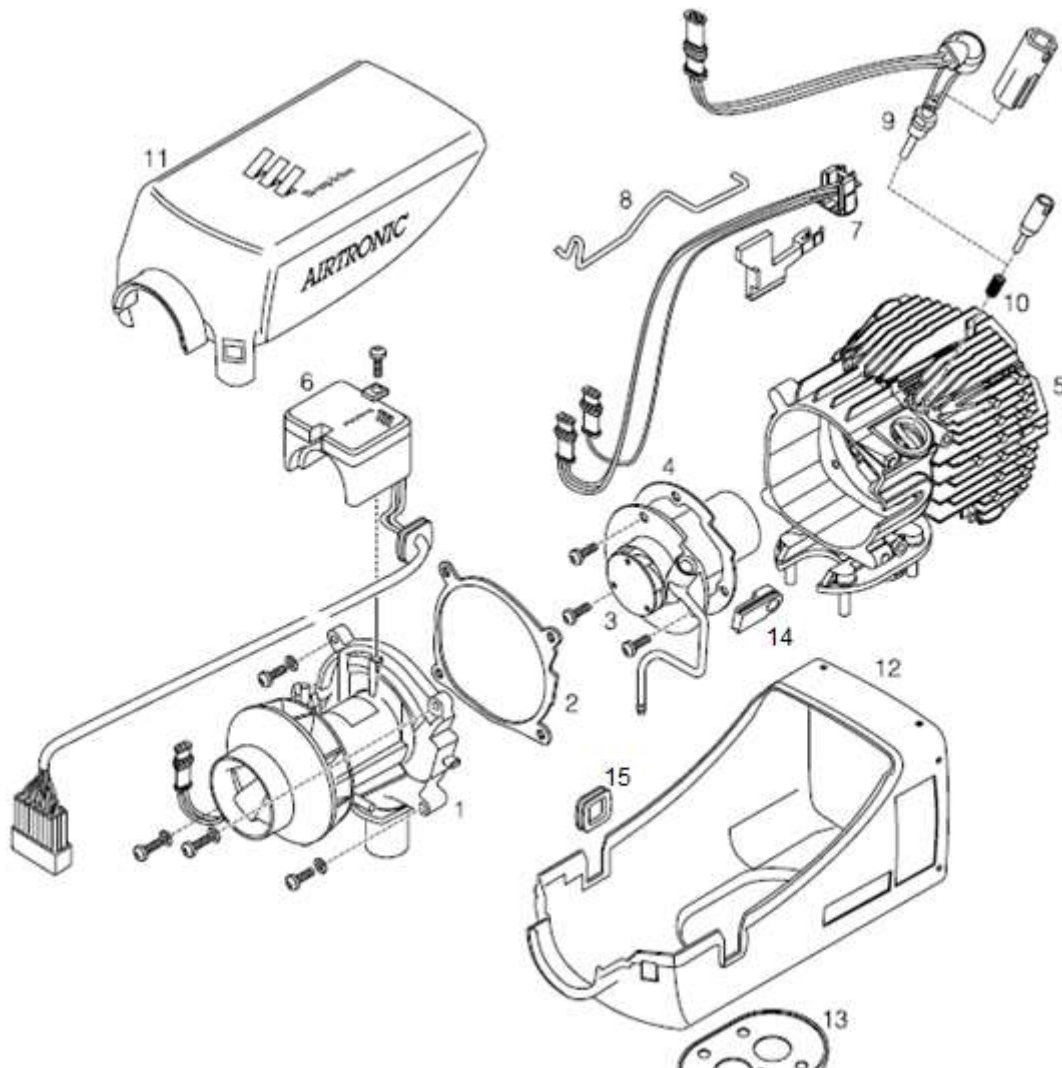
- 5) Remove the dirty filter in the combustion chamber with the pliers.



- 6) Clean the parts with soot by spraying brake lining spray/soot cleaner. Before using the brake lining spray, shake it and wait for it to penetrate after spraying on dirty parts. Clean the parts with a dry cloth.



- 7) Since the removed filter will be damaged, attach the new GC46 6M090 DA filter with its apparatus as in the image.



If there is any part damaged during the cleaning process or detected as already damaged, **only the damaged part or parts** can be replaced according to the numbers in the list below.

	<i>Part Name</i>	<i>Part Number</i>
1	Fan	GC46 18456 AA
2	Gasket – (between fan and heat exchanger)	GC46 18C264 CA
3	Combustion Chamber	GC46 18B483 AA
4	Gasket – (Between combustion chamber and heat exchanger)	GC46 18C264 AA
5	Heat exchanger	GC46 5H262 AA
6	Control Unit	GC46 18D606 BA
7	Overheat and flame sensor	GC46 6M090 AA
8	Clip	GC46 6M090 BA
9	Glow Plug	GC46 6M090 CA
10	Filter and tool for fitting	GC46 6M090 DA
11	Top Cover	GC46 18508 AA
12	Bottom Cover	GC46 18509 AA
13	Gasket	GC46 18C264 EA
14	Grommet	GC46 18C264 BA
15	Grommet	GC46 18C264 DA

Regards,

Ford Trucks Service Engineering