

Heavy Commercial Vehicles

Persons to whom the bulletin will be given:	Service Manager	Warranty Manager	Spare Parts Manager	Chief Technician	Service Advisor	BMIS
	✓	✓	✓	✓	✓	✓

Subject	Description of Connector Replacement Processes of PATS Module in Legacy Vehicles
Model	H476-H566
Summary	In Legacy vehicles, instead of Yanfeng brand PATS module, Nidec brand PATS module in FMAX vehicles will be used due to shortage and electrical wiring changes will be implemented as described.

Parts to be Used

Part Number	Part Name	Number of Parts
JC46-14B475-EY*	Connector Service Kit	1
8A6T-15607-A*	Nidec PATS Module	1
JC46-021C04-A*	Copper Ring	2
PC46-19H447-A*	Adapter Part	1

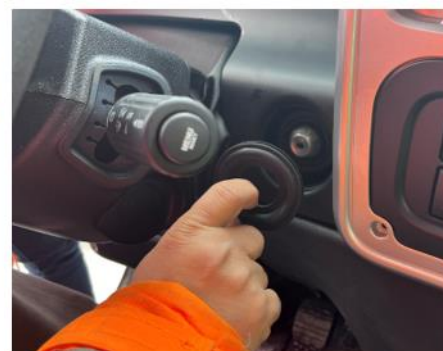
Labour

Labour Code	Labour Name	Duration (hour)
25C103 JF	IMMOBILISER R/I FULL	3,17

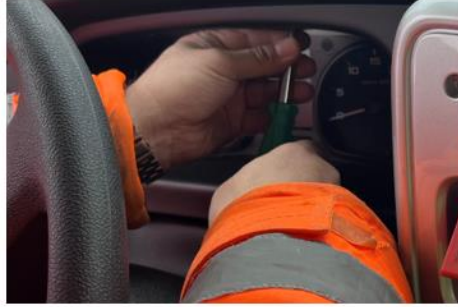
In Legacy vehicles, the following steps should be followed when malfunctions that require replacing the PATS module are encountered. Due to shortage Nidec PATS module will be used instead of Yanfeng PATS module.

Service Application

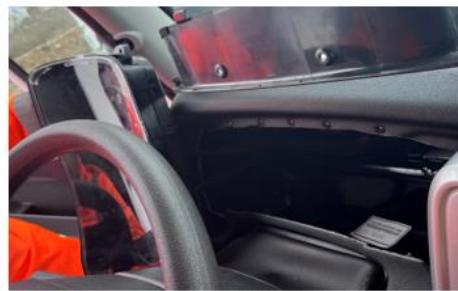
- Battery 24 Volt terminal must be removed.
- The 4 screws on the corners of the dashboard cover are carefully unscrewed and the dashboard cover is removed. The key hole grommet is removed.



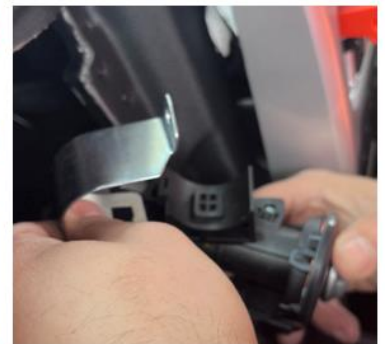
- The cluster bezel is removed by carefully unscrewing its 2 screws.



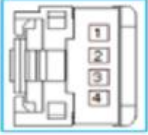
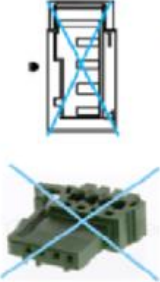
- The 4 screws on the corners of the cluster are removed and the cluster is safely taken to the left of the steering wheel as shown in the images. The PATS module and its connection parts are located inside the cluster housing.



- In order to take the PATS module out of the cluster, the metal connection bracket of the module must be removed from the inside. The steps for removing the bracket are detailed with the images below.




- C2RT23 (4 pin) coded connector is attached to the Yanfeng brand PATS module. The connector should be removed from the PATS module and the following steps should be followed.
- The Yellow cable coded CRT31 on the pin 1 of the C2RT23 connector must be removed from its pin. The cable should be cut from the end where the terminal ends. Instead of the cutted terminal, the terminal code 9U5T-14474-DB should be crimped to the cable.
- The Brown/Blue cable coded A_GD114F on the pin 2 of the C2RT23 connector must be removed from its pin. The cable should be cut from the end where the terminal ends. Instead of the cutted terminal, the terminal code 9U5T-14474-DB should be crimped to the cable.
- The Violet/Brown cable coded VRT07 on the pin 3 of C2RT23 connector must be removed from its pin. The cable should be cut from the end where the terminal ends. Instead of the cutted terminal, the terminal code 9U5T-14474-DB should be crimped to the cable.
- The Violet/Gray cable coded VRT23 on the pin 4 of the C2RT23 connector must be removed from its pin. The cable should be cut from the end where the terminal ends. Instead of the cutted terminal, the terminal code 9U5T-14474-DB should be crimped to the cable.

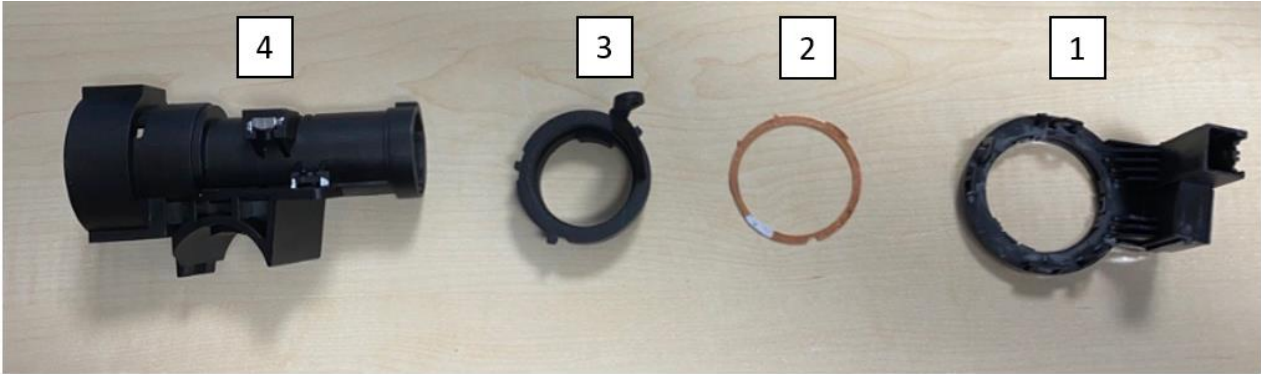



TO MODULE-ANTITHEFT [C2RT23]
CONNECTOR: ~~96AG-14489-NDA~~ **DU5T-14489-FA**

Cav.	No.	Color	Type	CSA	Option	Terminal
1	CRT31	YE	2TAD	0.35	ALL	9U5T-14474-DB
2	A_GD114F	BK/BU	2TAD	0.35	ALL	9U5T-14474-DB
3	VRT07	VT/BN	2TAD	0.35	ALL	9U5T-14474-DB
4	VRT23	VT/GY	2TAD	0.35	ALL	9U5T-14474-DB



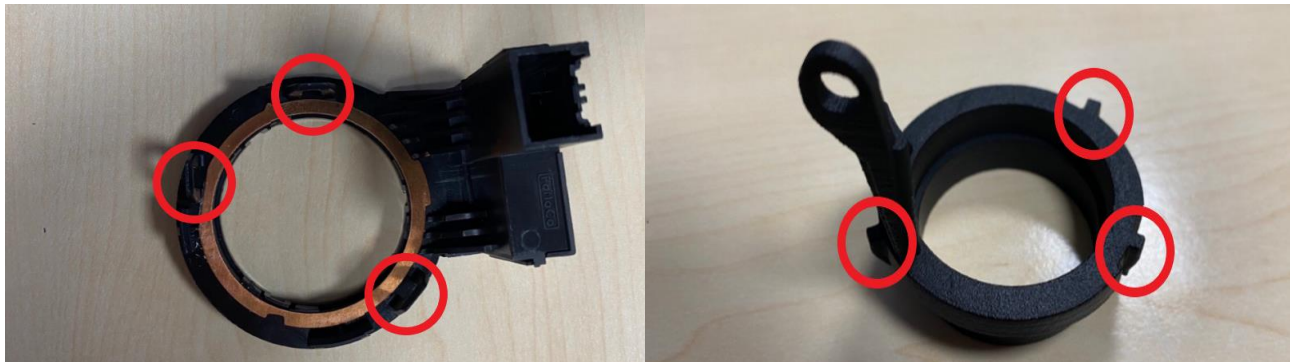
- DU5T-14489-FA (4 Pin) coded connector will be attached to Nidec PATS Module. JC46-14B475-EY* part numbered Connector Service Kit includes DU5T-14489-FA (4 Pin) coded connector and 9U5T-14474-DB coded terminal its inside
- The Yellow cable coded CRT31, which is removed from pin 1 of the C2RT23 connector and crimped with the terminal coded 9U5T-14474-DB, must be plugged to pin 1 of the DU5T-14489-FA coded new connector.
- The Brown/Blue cable coded A_GD114F, which is removed from pin 2 of the C2RT23 connector and crimped with the terminal coded 9U5T-14474-DB, must be plugged to pin 2 of the DU5T-14489-FA coded new connector.
- Violet/Brown cable coded VRT07, which is removed from pin 3 of the C2RT23 connector and crimped with the terminal coded 9U5T-14474-DB, must be plugged to pin 3 of the DU5T 14489-FA coded new connector.
- Violet/Gray cable coded VRT23, which is removed from pin 4 of the C2RT23 connector and crimped with the terminal coded 9U5T-14474-DB, must be plugged to pin 4 of the DU5T-14489 FA coded new connector.
- The parts to be used for assembly are given in the images below.
 - 8A6T-15607-A* PATS Module [1]
 - JC46-021C04-A* Copper Ring [2]
 - PC46-19H447-A* Adapter Part [3]
 - HC46-3K772-A* Housing [4]



- First of all, the part number JC46-021C04-A* (Copper Ring) is adhered to the part number 8A6T-15607-A* (Pats Module) as in the image below.



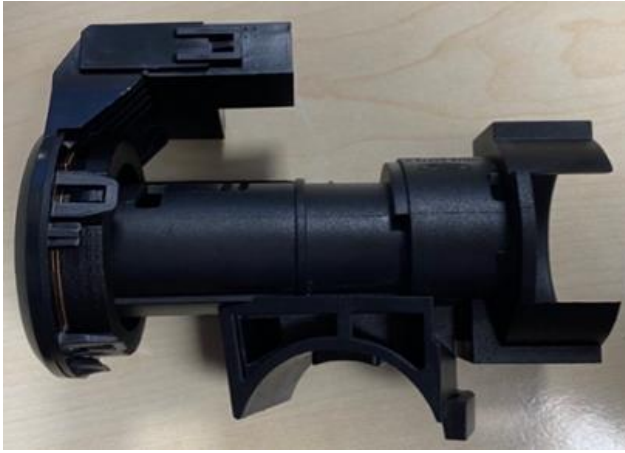
- Then, the PC46-19H447-A* (Adapter Part) with the tabs on it and the part numbers JC46-021C04-A* (Copper Ring) and 8A6T-15607-A* (Pats Module) which have been assembled to each other are installed so that the tab slots are facing each other.



- Finally, the second copper ring with part number JC46-021C04-A* (Copper Ring) is adhered to the other side of part number 8A6T-15607-A* (Pats Module). Photos showing the process are shared below.



- After these processes are completed, 8A6T-15607-A* (Pats Module) will be combined with the part number HC46-3K772-A* (Housing). Although the HC46-3K772-A* (Housing) is a common part in Yanfeng and Nidec modules, if the HC46-3K772-A* (Housing) is damaged, the HC46-3K772-A* (Housing) should also be replaced.



- There is no change in its mounting on the vehicle, similarly, it should be mounted with the screw and clamp on the HC46-3K772-A* (Housing).
- The image of the ignition key from inside the vehicle will be as follows.

