

**Heavy Commercial Vehicles**

Information bulletin to be circulated to:	Service Manager	Warranty Manager	Parts Manager	Master Technician	Service Consultant	BMIS
	✓	✓	✓	✓	✓	✓

<b>Subject</b>	Drawer Conversion and Electrical Installation Conversion for Dometic Refrigerator Use
<b>Variant</b>	H625
<b>Abstract</b>	If it is desired to install a Dometic brand refrigerator instead of the old Deco brand refrigerator in the vehicles coming to the service, the changes described in this TSB should be applied on the installation side and the drawer side.

**Parts to be Used**

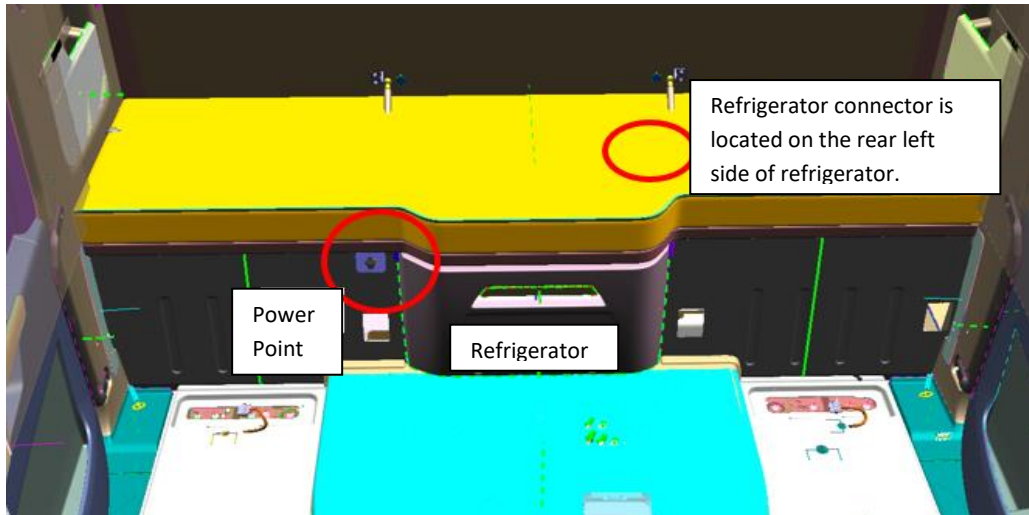
Part Number	Part Name	Number of Parts to be Used
NC46 14293 DA	Electrical Installation Kit	1
JC46 E310B16 AMW	Refrigerator Drawer	1
JC46 19J264 BC	Refrigerator	1

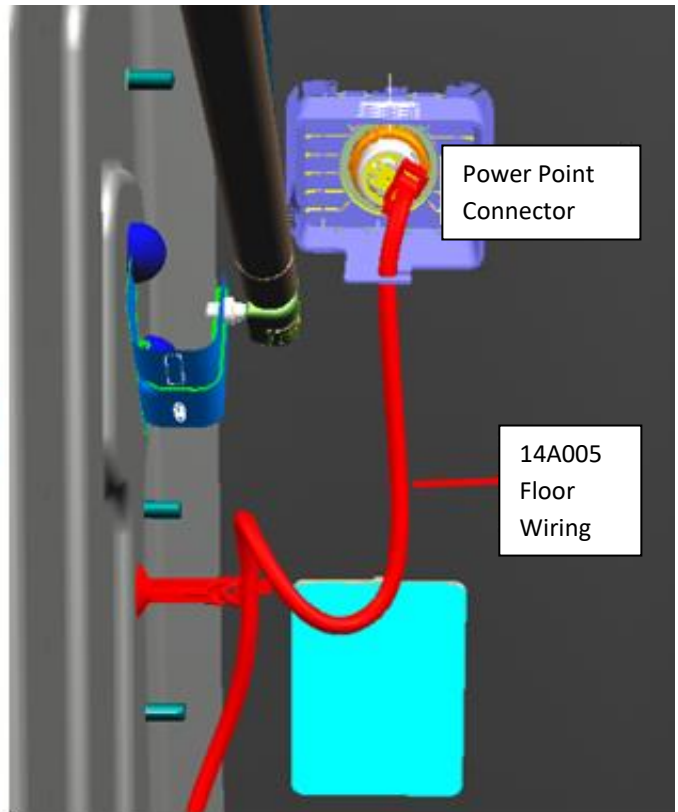
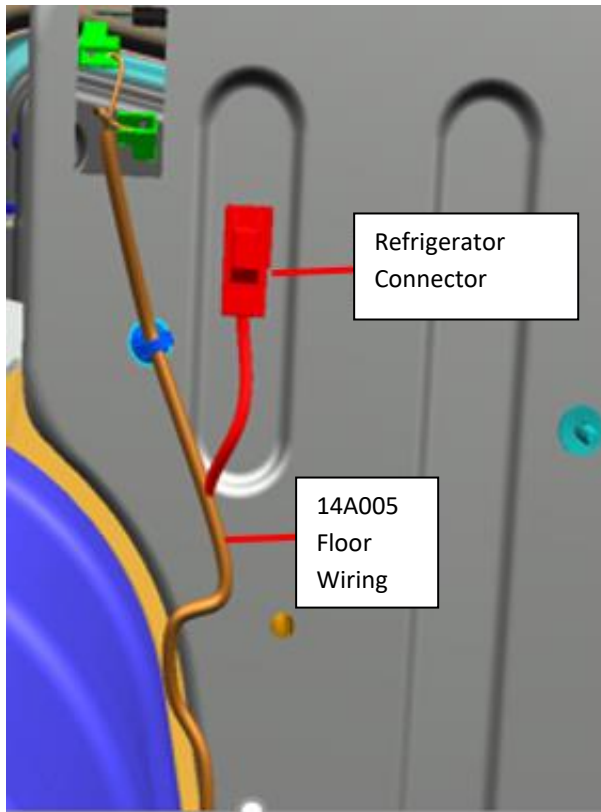
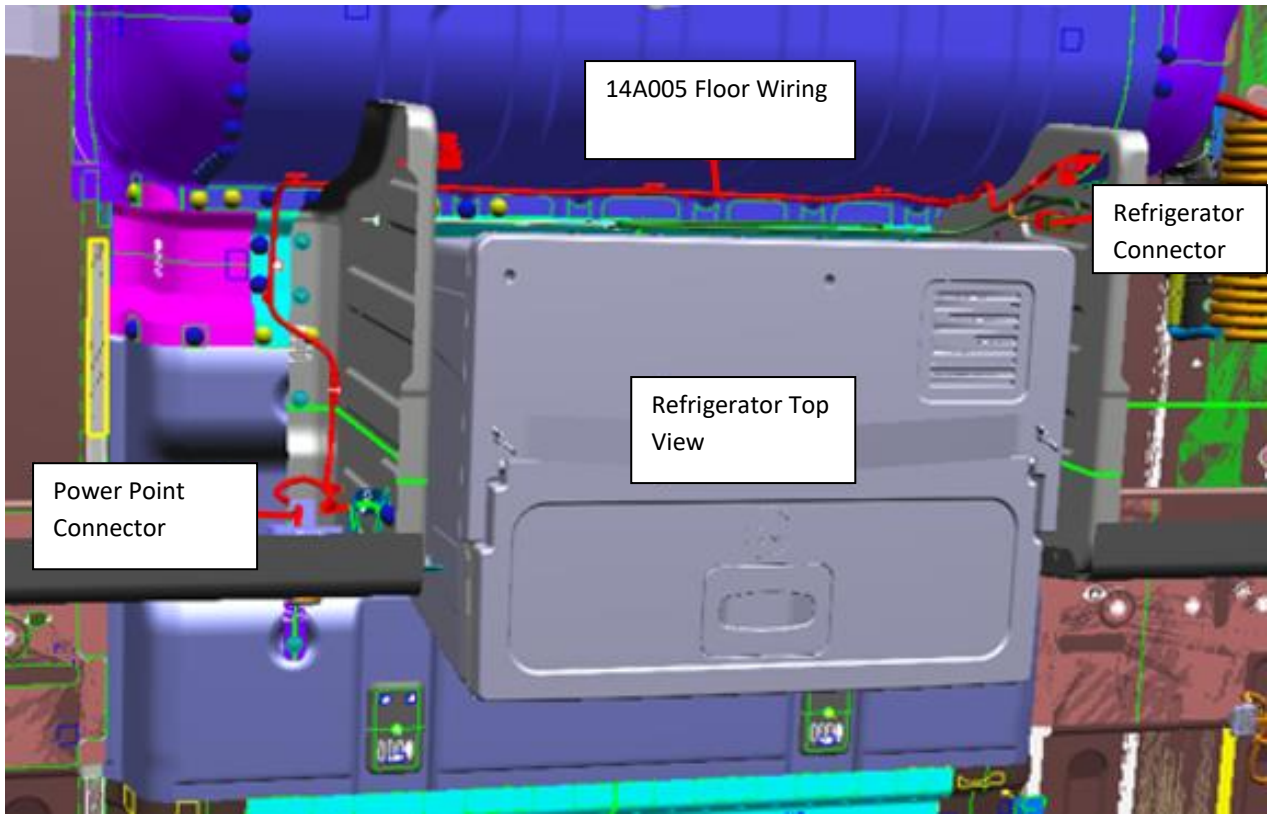
**Labor:**

Labour Code	Labour Name	Duration (hour)
36J264 DD	Electrical Installation & Refrigerator Drawer Conversion	2

**Implementation****Changes to Electrical Wiring and Drawer**

The changes to be made on the vehicle electrical installation are explained below. The cables entering the refrigerator connector on the vehicle installation, the cables entering the power point connector, 14A005 Floor Installation will be processed.

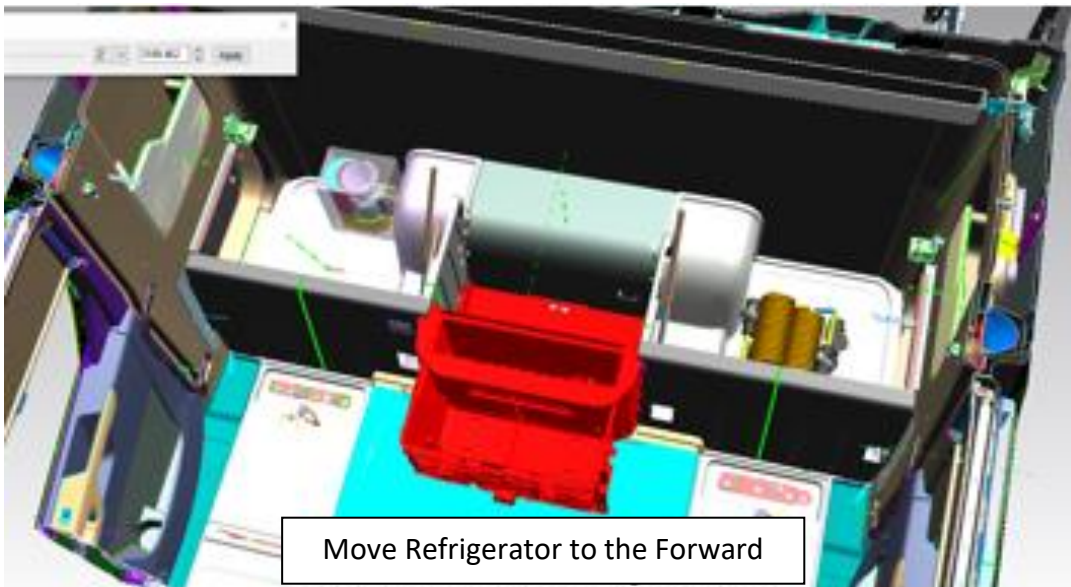
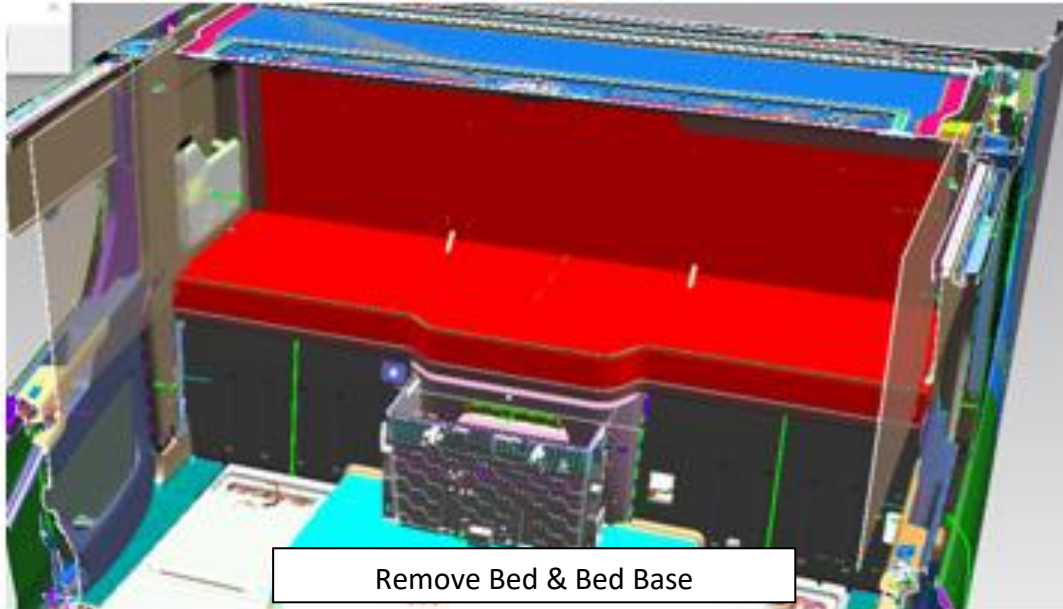




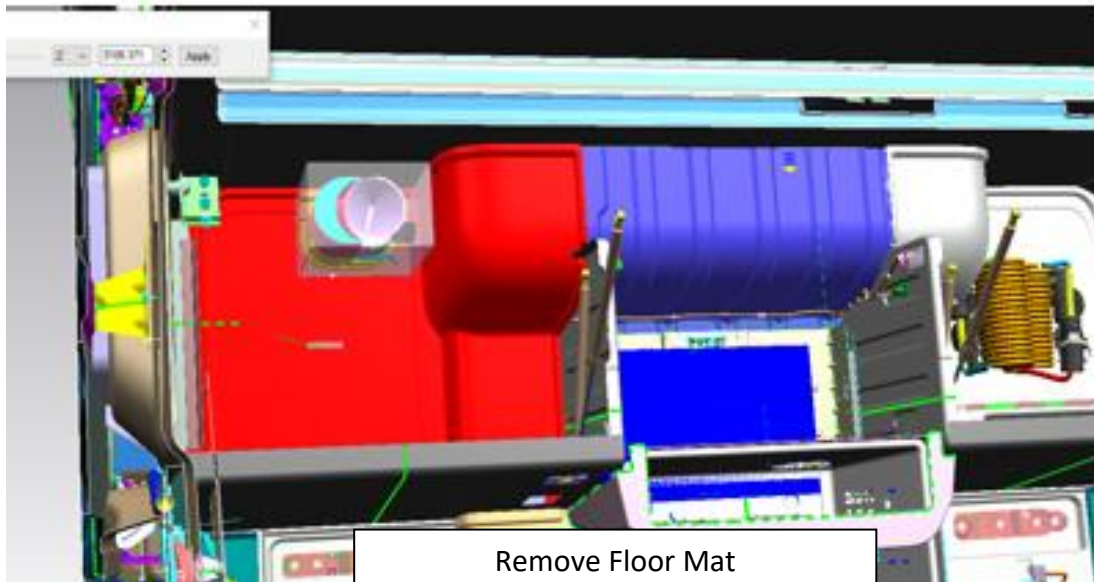
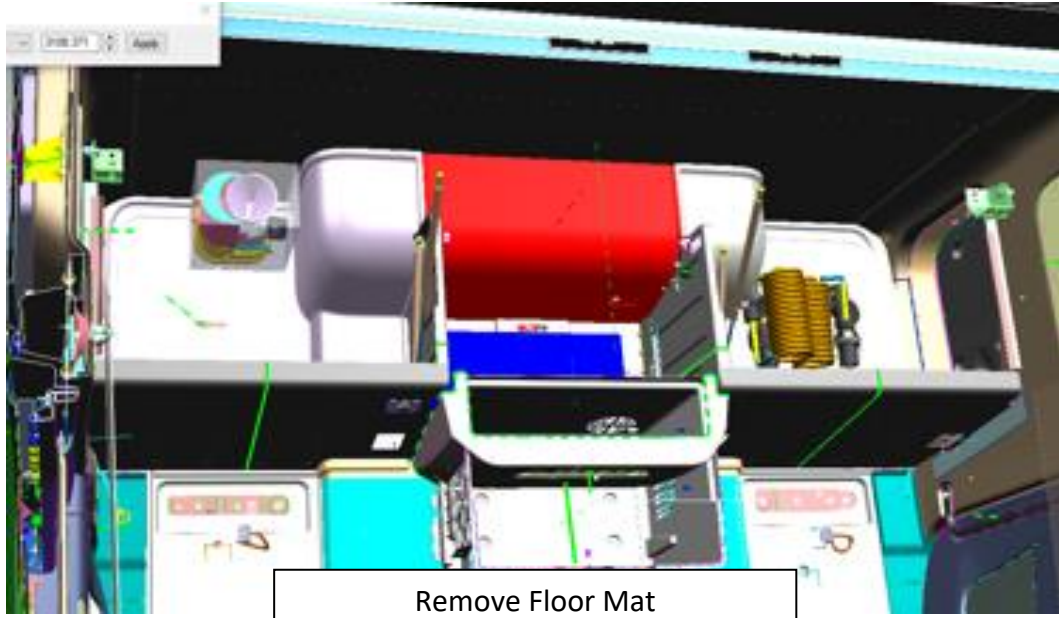
In order to operate on the connectors and the installation, respectively;

- Bed and bed base should be removed
- The refrigerator should be pulled forward
- The Floor Carpet Mat at the back of the refrigerator should be removed.
- The Floor Carpet Mat on the right side of the refrigerator should be removed.

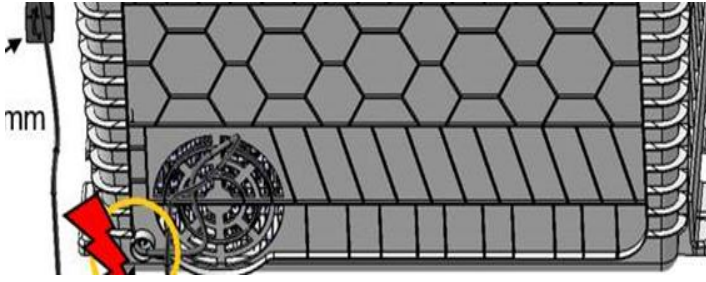
The connector on the refrigerator cable and the counterpart connector on the 14A005 Floor wiring must be disconnected.







- 1) First , the socket on the cable belonging to the old refrigerator and the connector on the 14A005 wiring, which is attached to the refrigerator socket, must be separated from each other.
- 2) The 7.5A Refrigerator fuse No. 24 in the fuse box should be removed, then the cables in the refrigerator connector on the 14A005 Floor installation should be cut with a pick cutter at a distance of 30 mm from the connector.
- 3) Changes to be made on the refrigerator drawer are listed as in the following steps. In order to make a new hole revision, the bolt and plumbing connection in the drawer side slots of the refrigerator must be removed and the refrigerator must be disassembled. In order for the new connector to pass, the hole in the back of the drawer must be enlarged with a plastic punch punch, if not, with a drill, at least 32 - 36 mm in diameter. The purpose here is to ensure that the new connector can pass through the hole

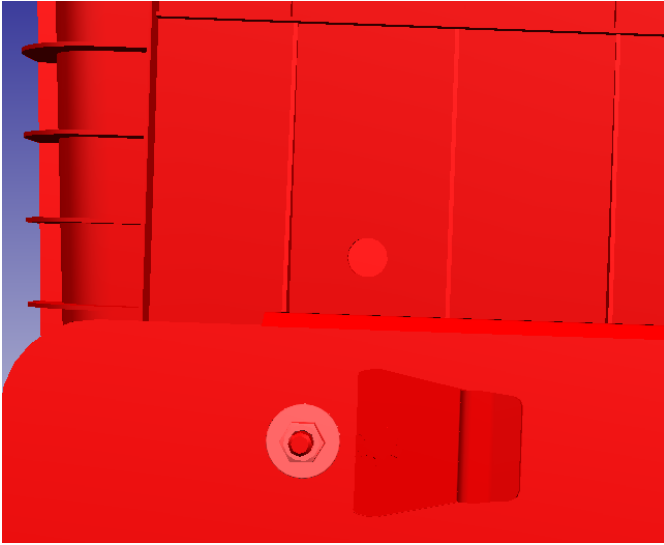


**Old Version**

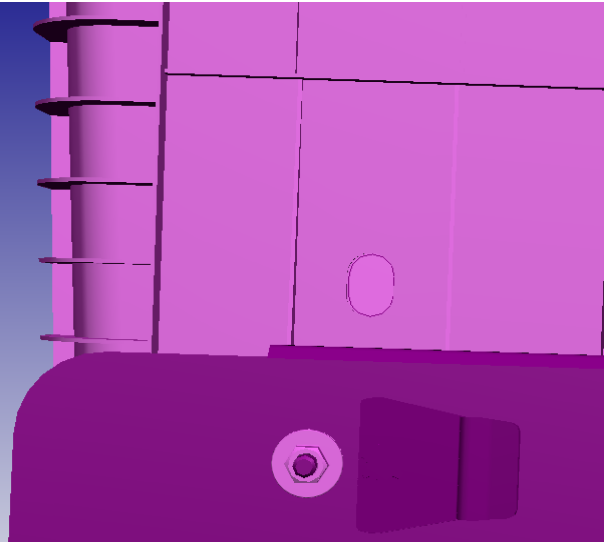


**New Version**

- 4) A similar process has been turned into a slot to prevent the tolerance stacking of the bolt connection points connecting the refrigerator and the drawer. If necessary (in case the bolt does not hold the thread in the nut hole), these holes should be expanded with the same method until the thread is engaged. This process needs to be done separately for both the right and left sides of the refrigerator.

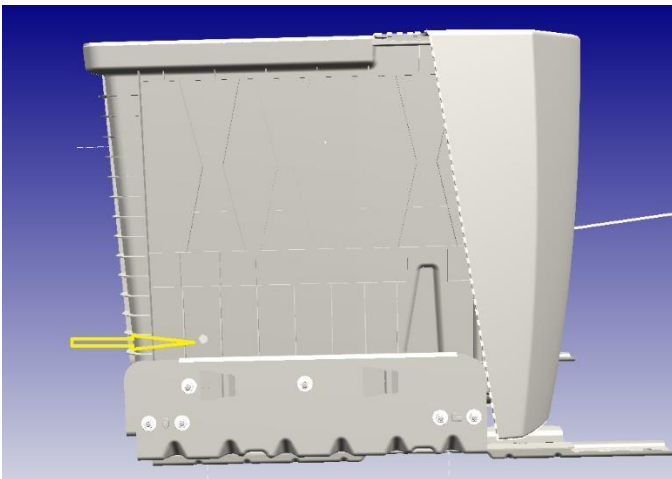


**Old Ref. Connection Hole**

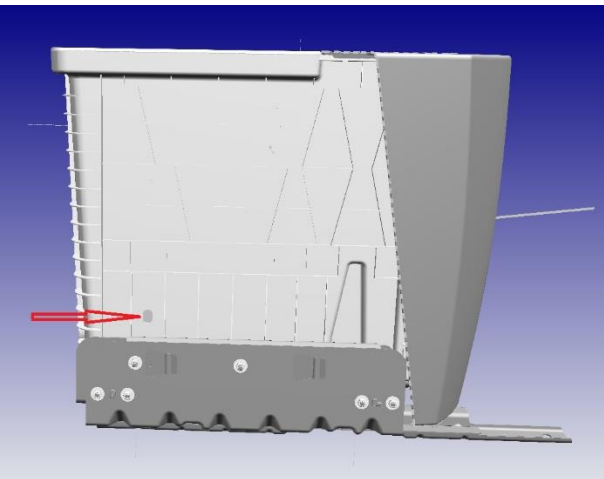


**Suggested Change when necessary**

In the picture below, there is a remote view of the cabinet for better understanding of the connection hole.

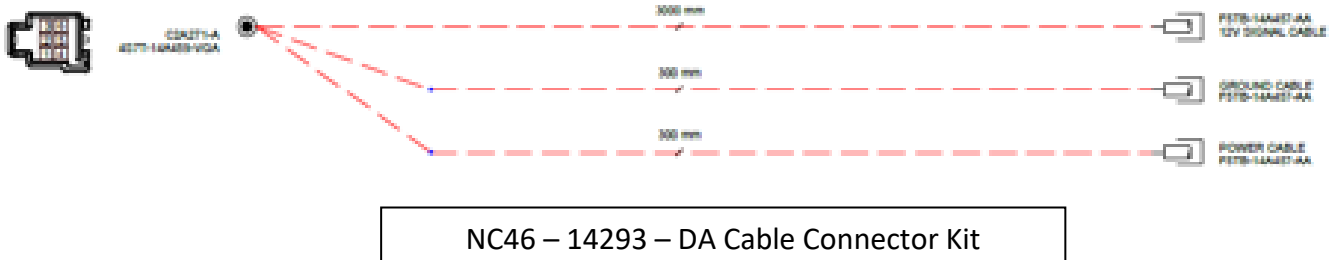
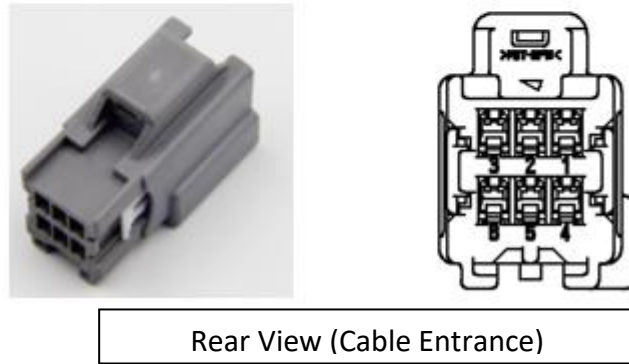
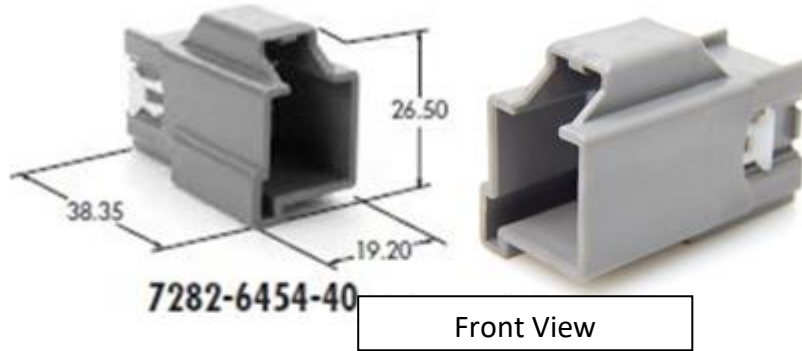


**Old Ref. Connection Hole**



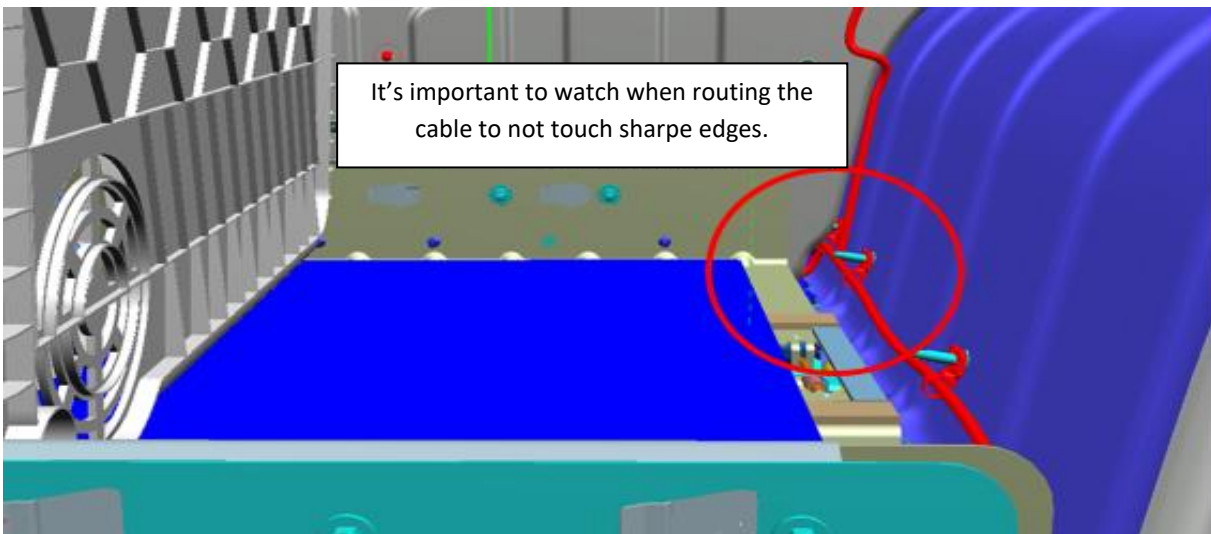
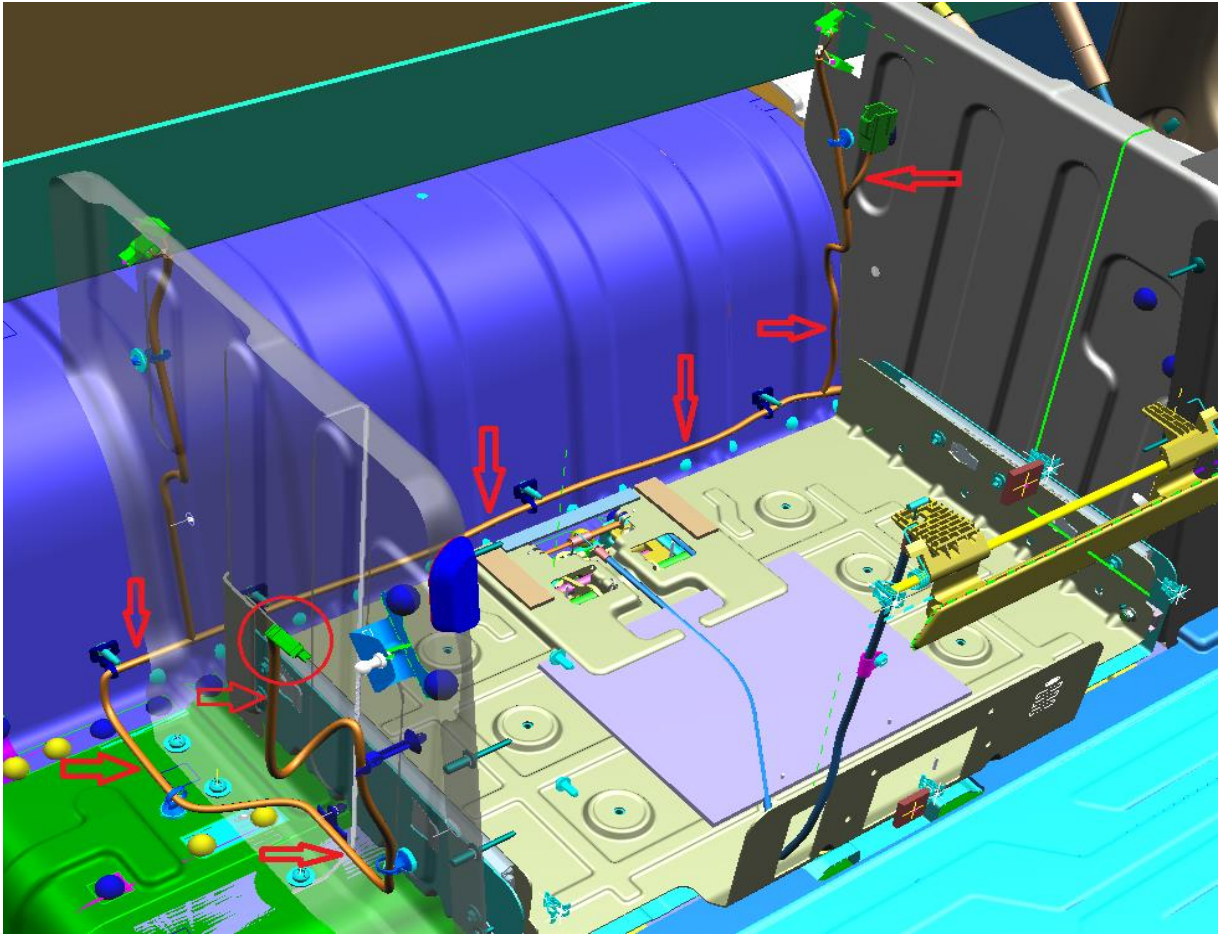
**Suggested Change when necessary**

- 5) The 6-pin socket in the NC46-14293-DA plumbing kit will be the new refrigerator socket. The purple/red cable coming out of the 1st pin of this socket will be connected to the purple/red cable on the installation side, and the black/blue cable coming out of the 3rd pin will be connected to each other with the black/blue cable on the installation side. After this process, these two exposed cables should be covered with tape up to the socket. The new socket must be fixed in the same spot as the old socket.

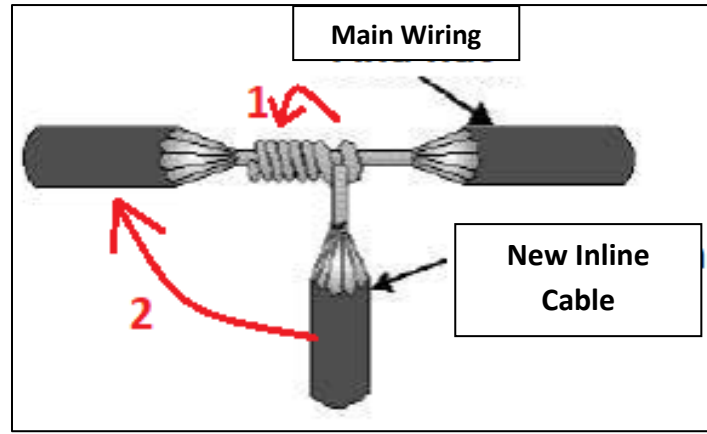


- 6) The yellow/green cable located at pin 5 of the 6-pin new refrigerator socket in the NC46-14293-DA installation kit must be routed through the 14A005 wiring to the 12V Power Output on the bed side, along the route indicated by the red arrows below. During this removal process, the cable should be taped and then strapped every 15-20 centimeters on the 14A005 installation. While passing the cable from the refrigerator section to the power point section, attention should be paid to its routing, and the edges of the metal wall between the sections should be prevented from damaging the cable.





- 7) The above-mentioned cable should be added to the yellow/green cable on pin 2 of the 12V Power Outlet socket. Before doing this, the 20A Power Point fuse numbered 6 in the fuse box must be removed. The insulation of the yellow/green cable should be stripped and care should be taken not to break the copper wires. Then, the newly drawn cable should be added with the following method. The cable should be folded over in the direction of its arrival and wrapped with insulating tape so that no copper wire is exposed.



- 8) The fuses that were removed at the end of these processes should be replaced, and the interior trim parts should be put back in their places.