

Heavy Commercial Vehicles

Information bulletin to be circulated to:	Service Manager	Warranty Manager	Parts Manager	Master Technician	Service Consultant	BMIS
	✓	✓	✓	✓	✓	✓

Subject	F-MAX Passenger Seat Replacement
Model	F-MAX (H625)
Summary	If it is requested to replace the mechanical suspension passenger seat with an air passenger seat on F-MAX (H625) vehicles, the following procedures must be required. When the passenger 's seat is changed, it is necessary to change the socket in the wiring that goes to the passenger 's seat for the compatibility of the wiring connector.

Parts to be Used:

Part Number	Parça Name	Usage Quantity
NC46-E60016-F/G	AIR SUSPENDED PASSENGER SEAT	1
JC46 E13036 BCW or JC46 E13037 BCW (Vehicles produced before 01.07.2022)	FLOOR MAT	1
JC46-14B475-HBA	CONNECTOR SERVICE KIT	1

Labour:

Labor Code	Work Name	Duration
40C004 Q	PASSENGER SEAT REPLACEMENT (FROM MECHANICAL SUSPENSION TO AIR SUSPENSION) 18MY	2 Hours

Service Application:

Regarding to F-MAX (H625) vehicles; If the mechanical suspension passenger seat is to be replaced with an air suspended passenger seat, the following procedures will be required. Due to the fabric difference, there are F and G level seats. It will be selected depending on the customer's request.

1. Air Line Installation

- 1.1. First, the seat and floor mat must be removed from the vehicle.
- 1.2. When Access to the floor plate is achieved, 2 holes with a diameter of 6.5mm should be drilled in the areas indicated in Image-1.

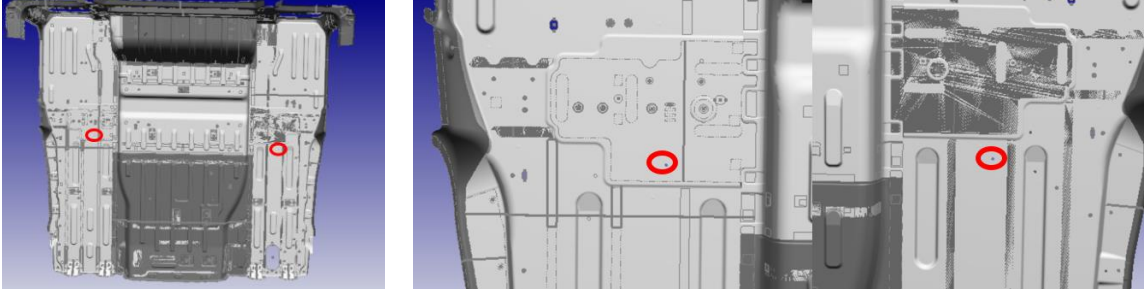


Image-1: Floor plate 6,5 mm holes

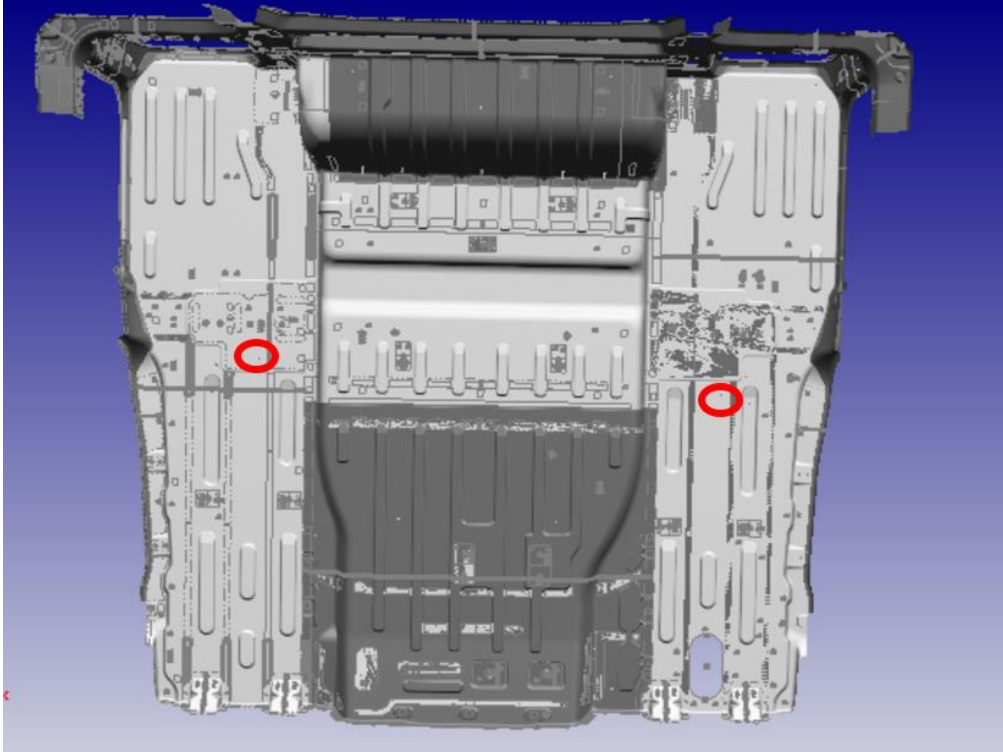


Image-2: Floor plate 6,5 mm holes

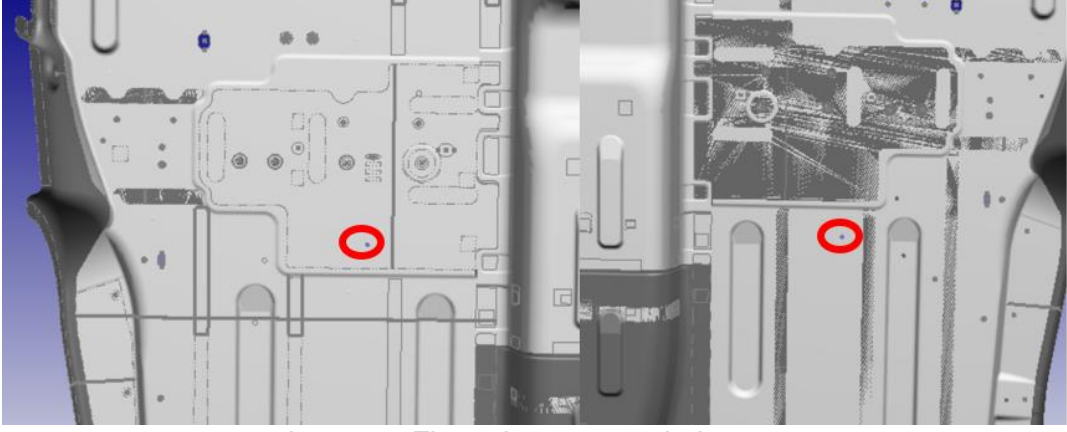


Image-3: Floor plate 6,5 mm holes

- 1.3. Holes with a diameter of 6.5 mm should be drilled on the brackets (right and left) connected to the under-bed supports with a drill as indicated in Image-4 below.

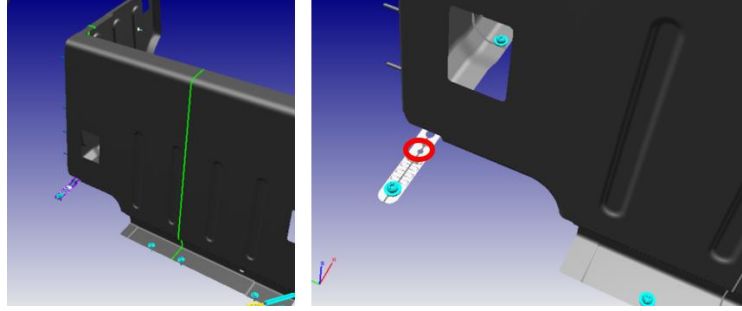


Image-4: Underbed stowage brackets

- 1.4. The part numbered 6G9T 14197 AXA (strapped pin) must be attached to the holes drilled in the floor plate.

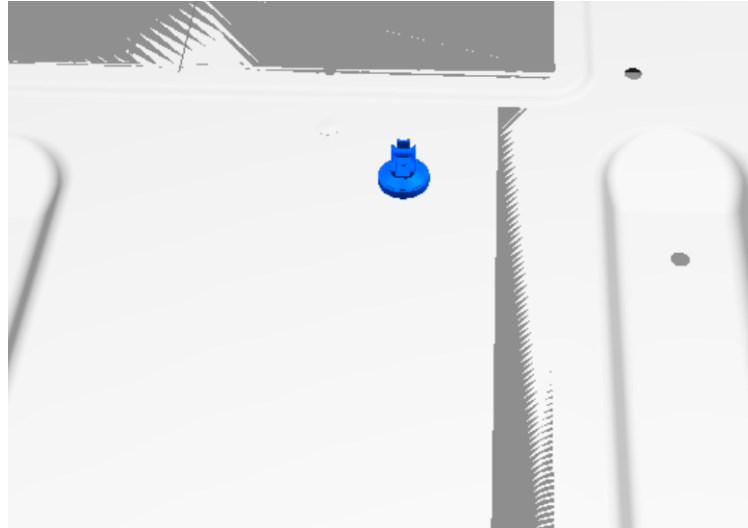


Image-5: Floor plate with strapped pin

- 1.5. The air line coming to the driver's seat area is cut to the appropriate length and turned into a double outlet pipe using the JC46 E600C97 DA numbered T connector as follows. This connector is fixed by connecting to the attached strap (6G9T 14197 AXA).

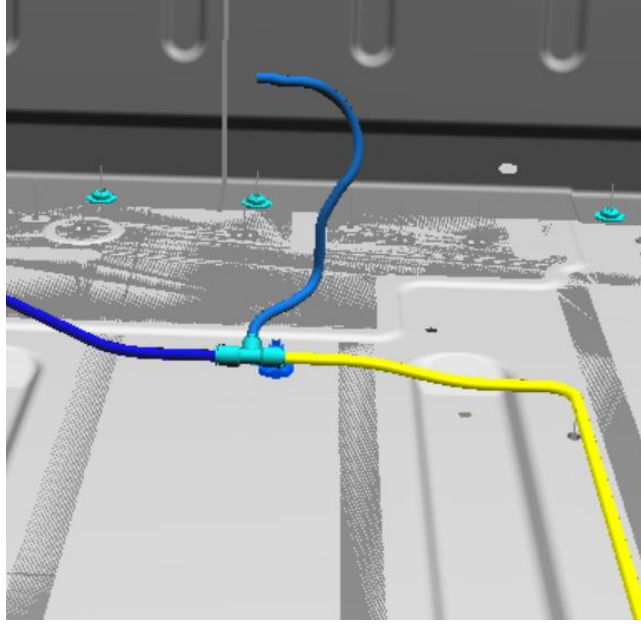


Image-6: Driver area air line

- 1.6. The air line should be extended to the area where the passenger seat is, following the route below.

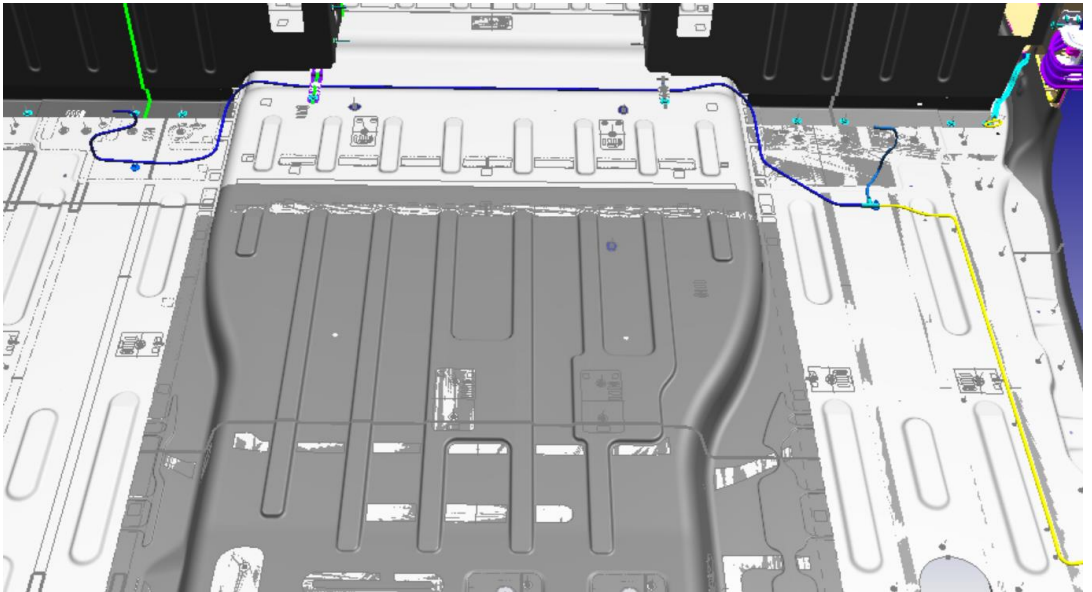


Image-7: Air Line

- 1.7. After the air line is routed, it is attached to the holes drilled in the under-bed brackets with the strap number 8C46 2D218 AA as in the image.

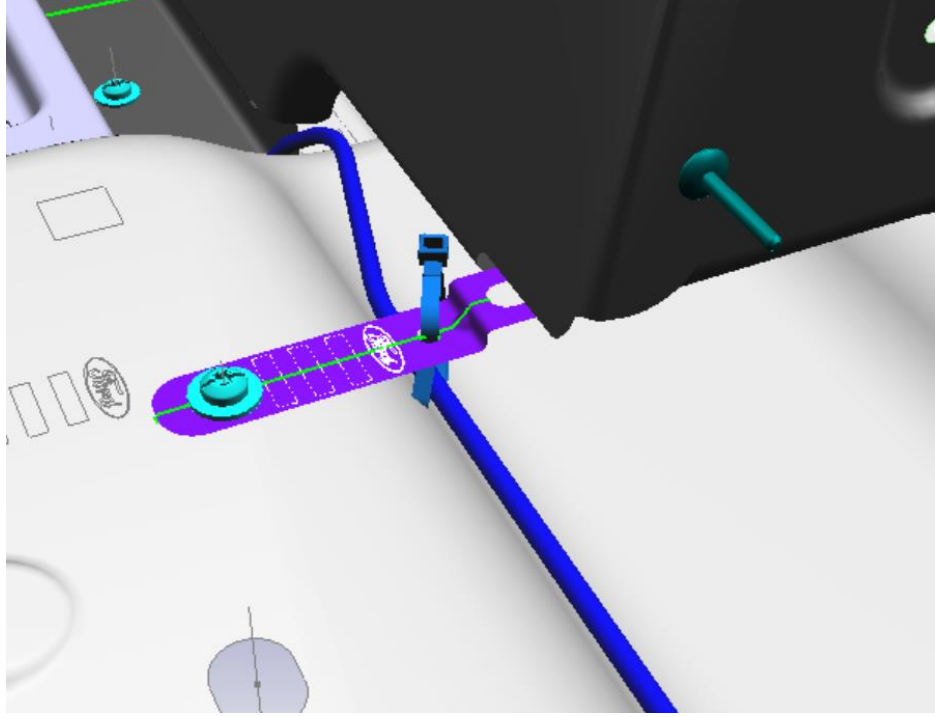


Image-8: Underbed stowage brackets

- 1.8. The air pipe is fixed to the part numbered 6G9T 14197 AXA (strapped pin) added to the area where the passenger seat is, and the air pipe is attached to the connection area under the passenger seat.

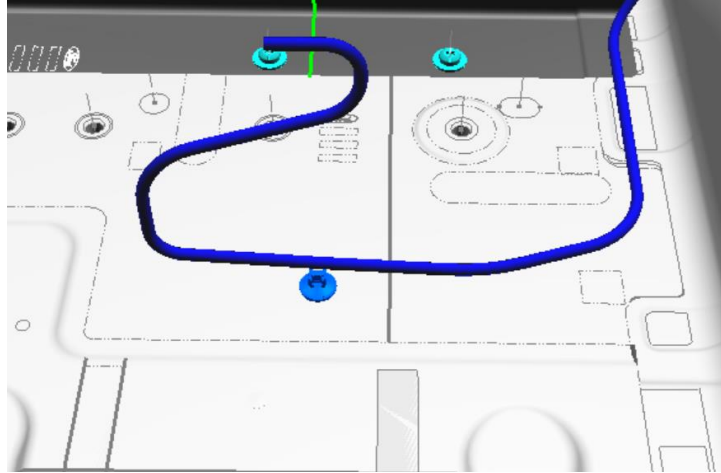


Image-9: Air passenger seat under-seat installation area

- 1.9. After these processes are completed, if the vehicle is manufactured before 01.07.2022, carpets with part numbers JC46 E13036 BCW and JC46 E13037 BCW should be ordered. If it is produced after 01.07.2022, the existing carpets on the vehicle will continue to be used.

2. Socket Change

In case of replacing the passenger's seat numbered NC46-E60016-F/G in F-MAX vehicles, the following changes should be made in the branch of the JC46-14B475-HBA wiring that goes to the passenger's seat in order.

Important Note: There is a 6-pin connector on the air passenger seat. If the wiring connector to the passenger seat is currently 5 pins, the following operations should be performed.

- 2.1. The harness connector to the passenger seat is currently 5-pin. A new 6-pin socket will come from the service kit with part number JC46-14B475-HBA. The procedure to be done here is only connector replacement. Shifting to any other pin in cables, getting additional etc. is not going to be done.



Image-10: Old Connector (5 pins)



Image-11: New Connector (6 pins) – Available in kit no: JC46-14B475-HBA

- 2.2. In the wiring connector going to the passenger seat, all 4 pins, except for pin 5, are full.

- 2.3. The 4 cables in the 5-pin connector will be removed one by one and moved to the 6-pin connector in a way that the pin numbers will remain the same. In other words, the cable in pin 1 of the old connector will be moved to the pin 1 of the new connector. All pins will be moved accordingly.

Old Connector Pin Numbers	Cable Name		New Connector Pin Numbers	Cable Name
1	CBB77B	→	1	CBB77B
2	B_GD343B	→	2	B_GD343B
3	A_GD343H	→	3	A_GD343H
4	CR150F	→	4	CR150F
5	EMPTY		5	EMPTY
			6	EMPTY

Best Regards,

Ford Trucks Service Engineering