

Heavy Commercial Vehicles

Information bulletin to be circulated to:	Service Manager	Warranty Manager	Parts Manager	Master Technician	Service Consultant	BMIS
	✓	✓	✓	✓	✓	✓

Subject	Correction of rear axle misalignment on C4AS suspension vehicles.
Variant	4x2 Vehicles
Summary	In this TSB solution method for rear axle misalignment on C4AS suspension vehicles is defined.

Labour Code	Labour Name	Labour Hour
152151MP5	Rear Axle Misalignment Fixation	1 hr

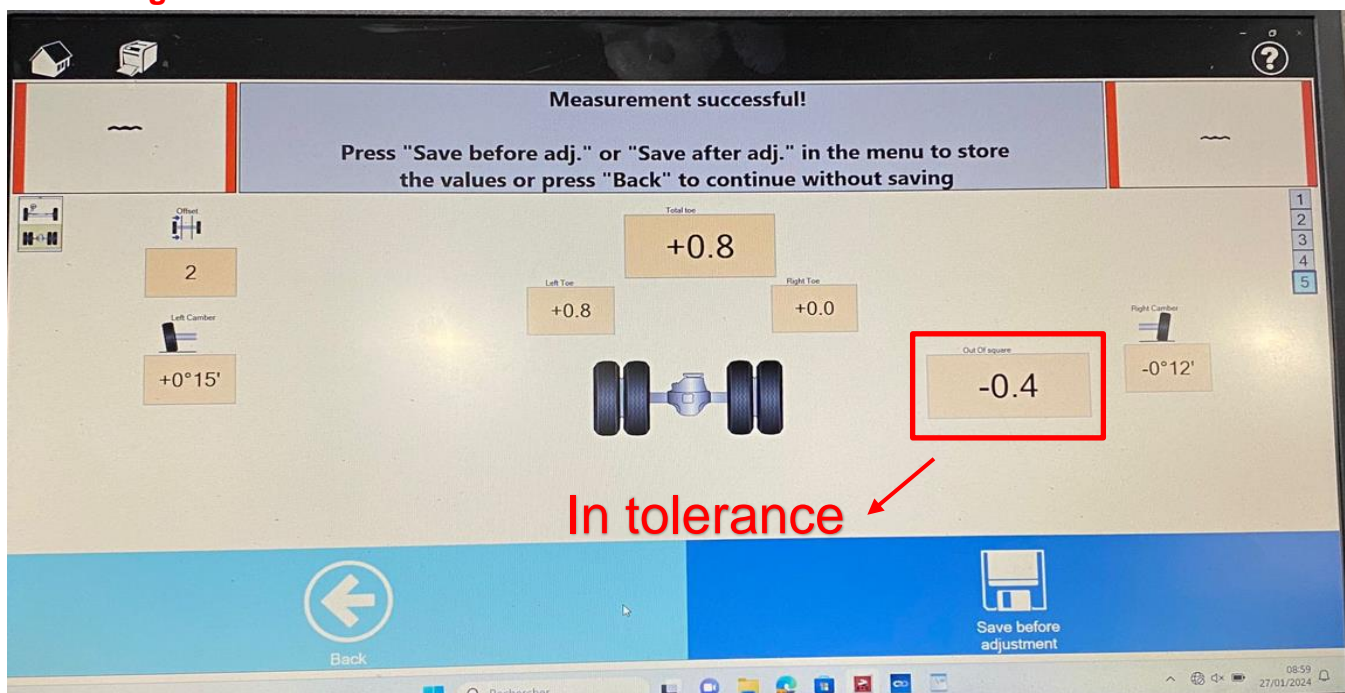
Part Code	Part Name	Qty
9C46-5A602-AA	Washer 19x31x3	4 pcs

Rear Axle Misalignment Measurement

The values rear axle drive angle which mentioned in the specifications, can be measured by using wheel alignment device which described in “**TSB-ENHCV-0822-Wheel Alignment Process and Specification (F-MAX and 4x2 Legacy Vehicles) Bulletin**”.

*** If crab angle value is in tolerance, rear axle rotation adjustment should not be performed!**

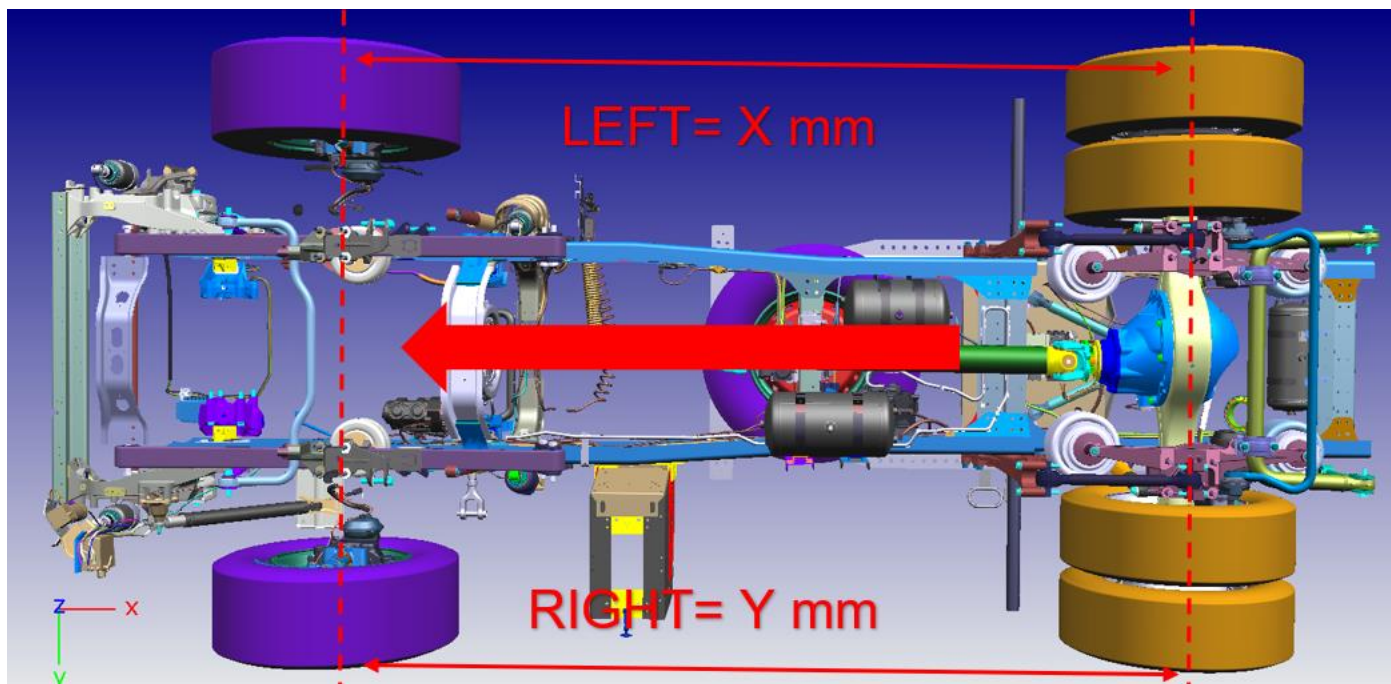
*** Crab angle tolerances : 0 ± 5.5 mm/m**



If there isn't any chance to understand it by using wheel alignment device, please measure the distance between front and rear axles;

Alternative Measurement;

- Wheel alignment devices centering tool should mount on the wheel trim center.
- **Front tires angles should be on the same axis with the vehicle.**
- Measure the front & rear axles distance (Wheel Base) from the mounted wheel alignment devices centering point to centering point. The aim of this to understand wheel base measurement.
 - Wheel base value for the left side. Wheel Base Measurement_LEFT= X mm
 - wheel base value for the right side. Wheel Base Measurement_RIGHT= Y mm
- Proceed the below directions until X-Y values fits into the specifications.

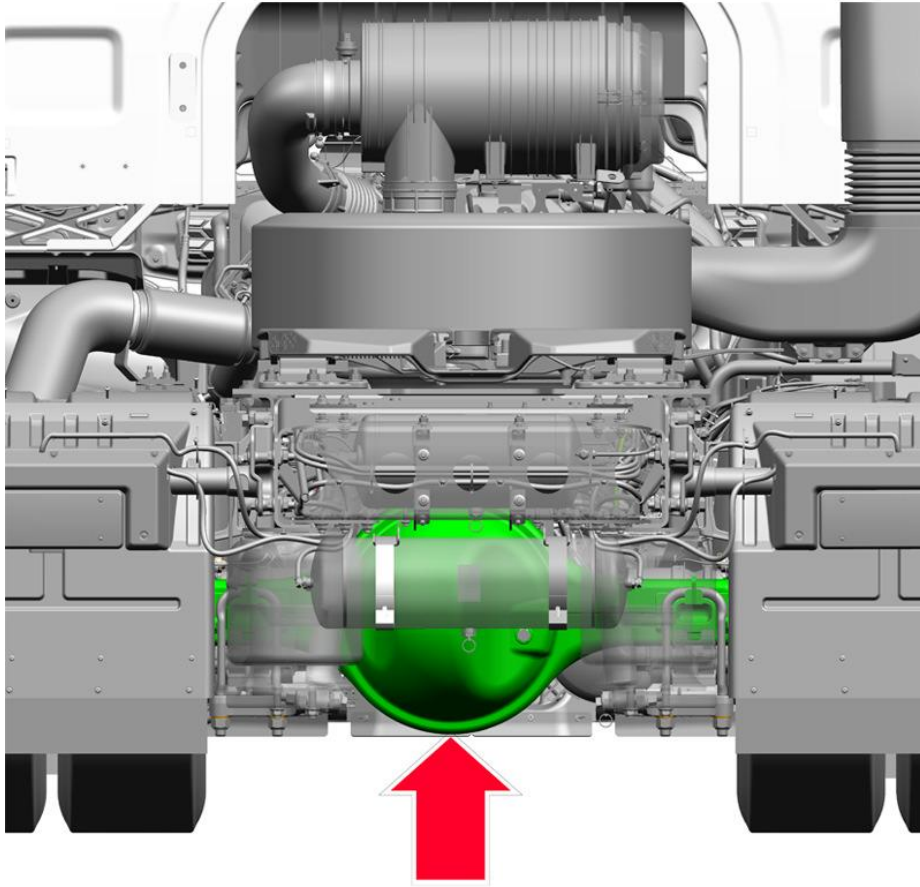


**** X-Y values differences are in tolerance, rear axle rotation adjustment should not be performed!**

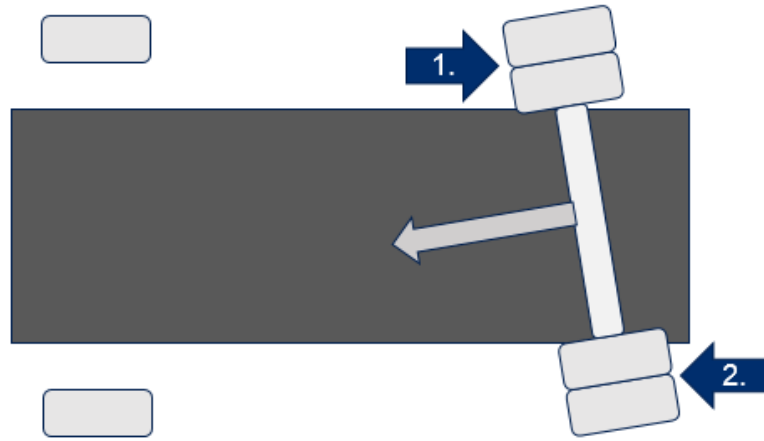
	Toe (mm/m)	Toe (Angle)	Crab Angle (mm/m)	Wheelbase Difference L-R (mm)
F-MAX	0 - 1.7	0-0°6'	0±5.5	10

Rear Axle Rotation Adjustment :

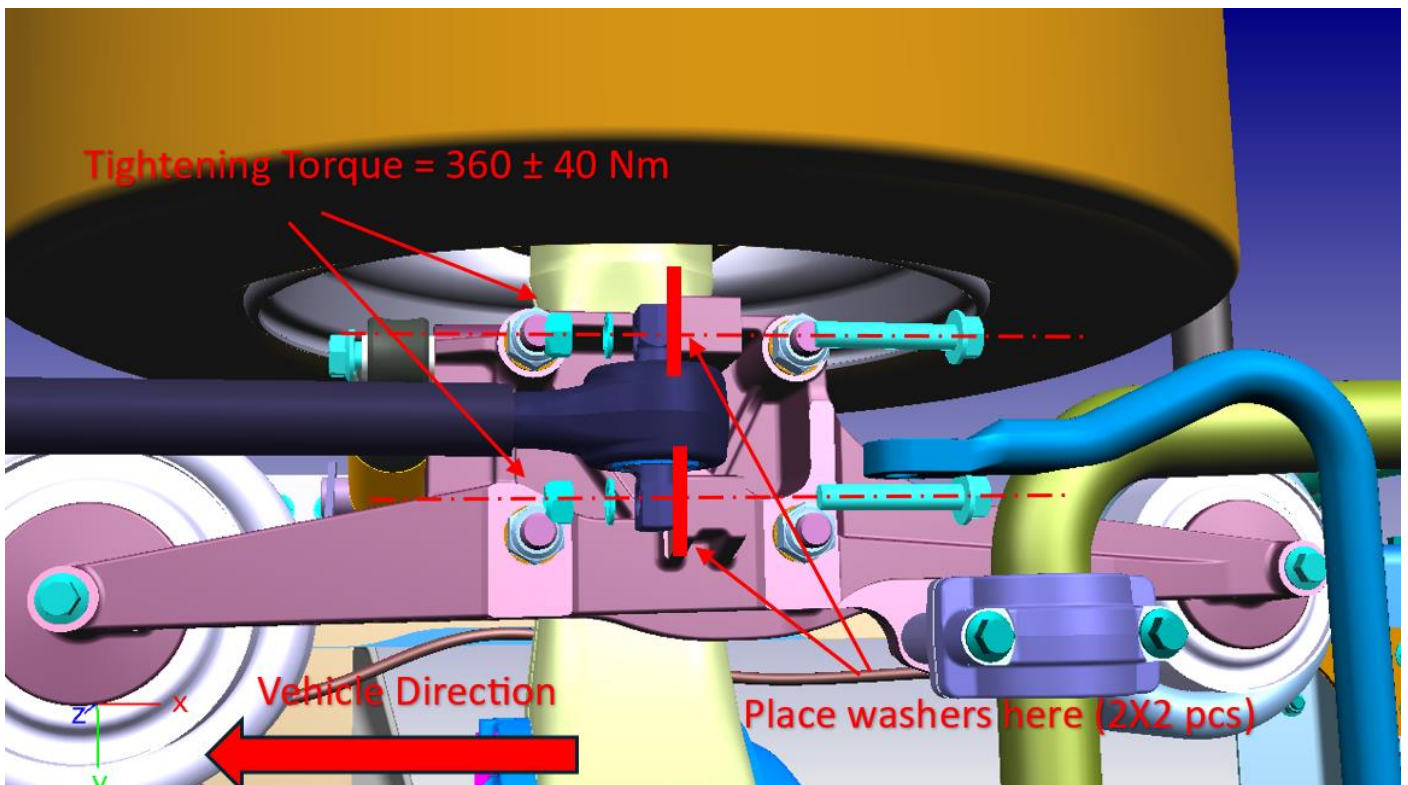
- Take vehicle to channel.
- Drain the air bellows from the remote and place a jack with sufficient capacity under the indicated location below the differential unit.



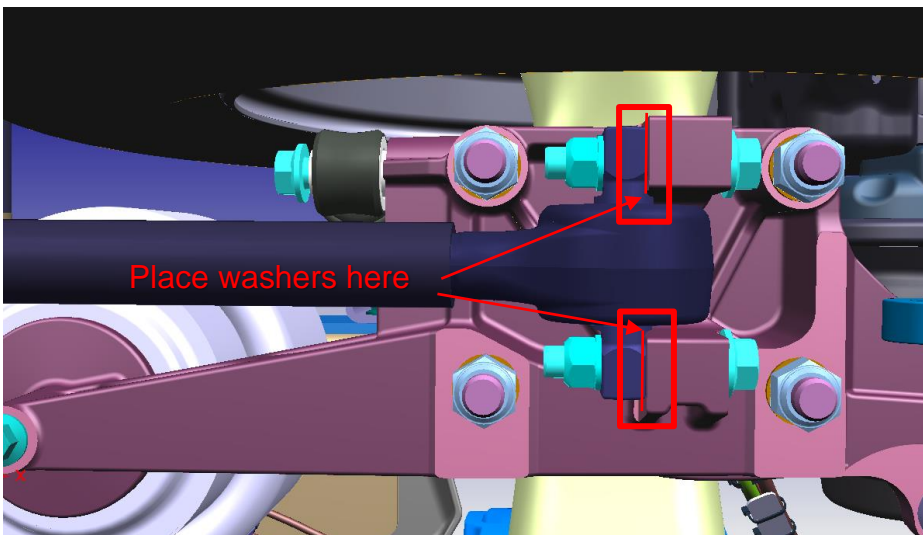
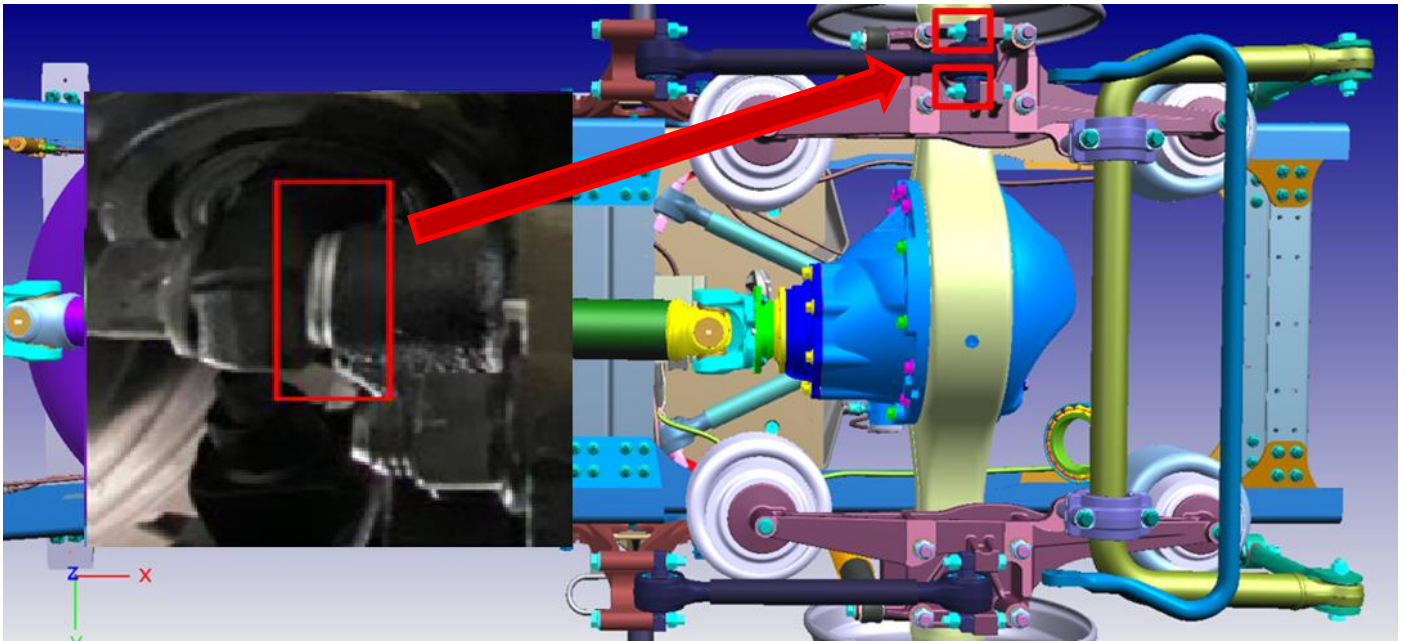
If axle rotation as in illustration below;



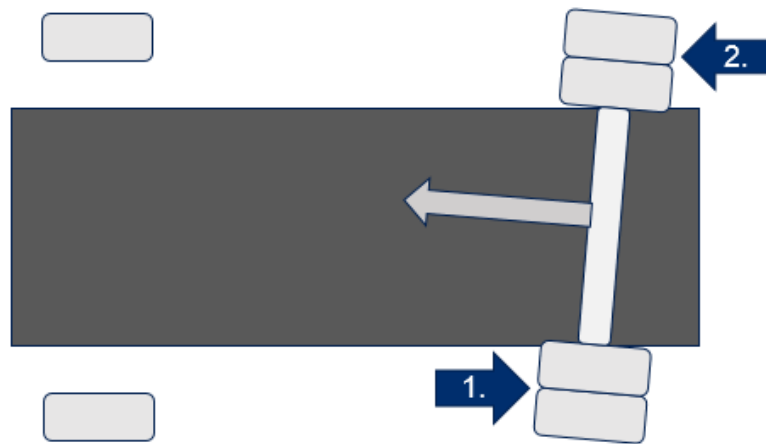
- Remove 2 x M18 bolts and place 2 pcs 9C46-5A602-AA washers as below and then tight bolts again. (Tightening Torque Value : 360 ± 40 Nm)



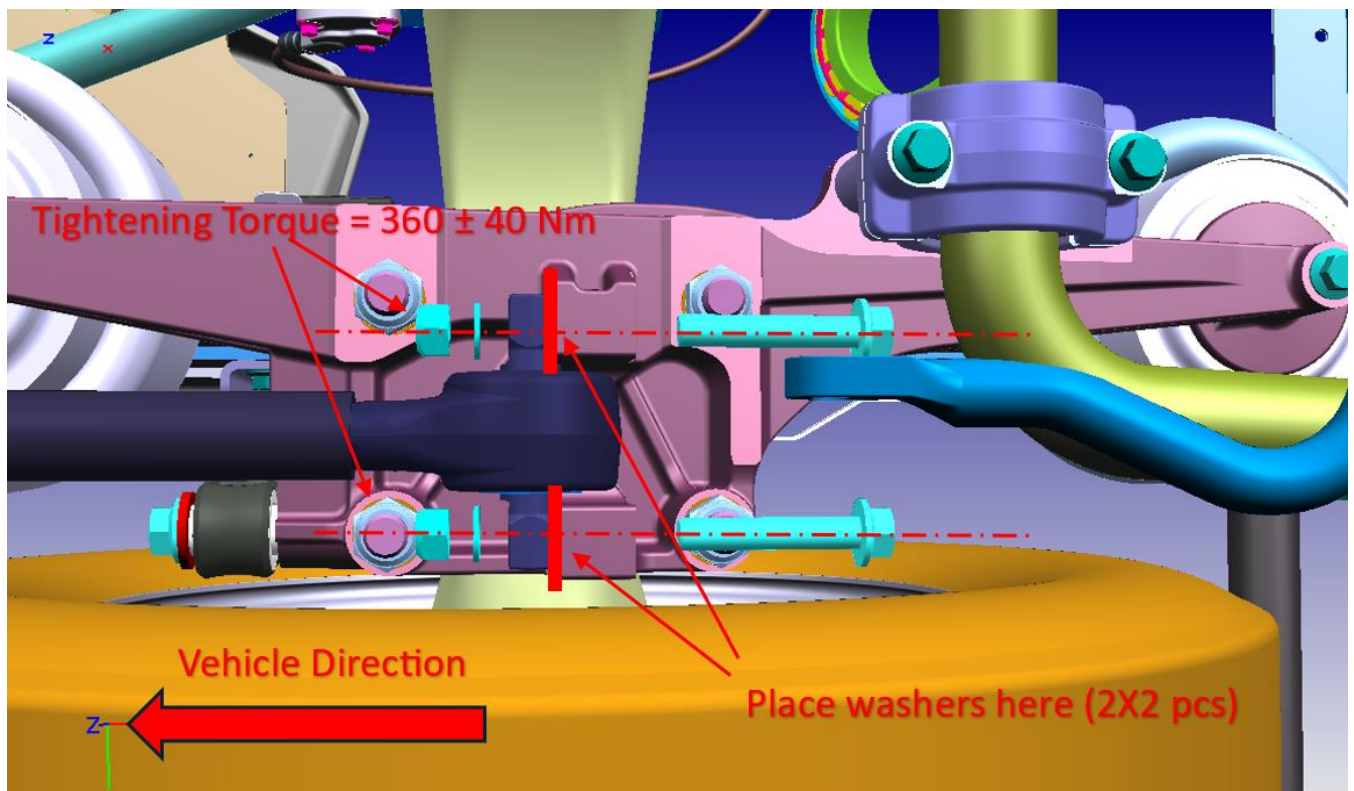
- Placement view of 2 pcs 9C46-5A602-AA washers;



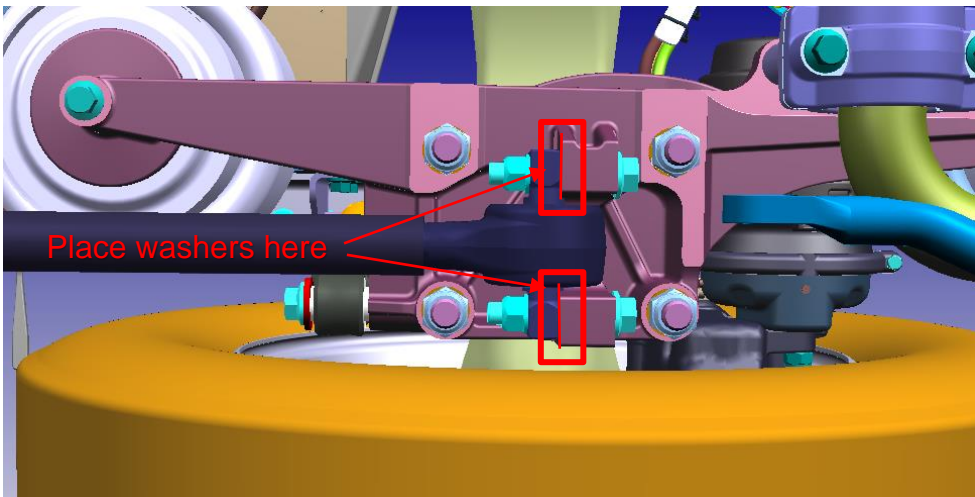
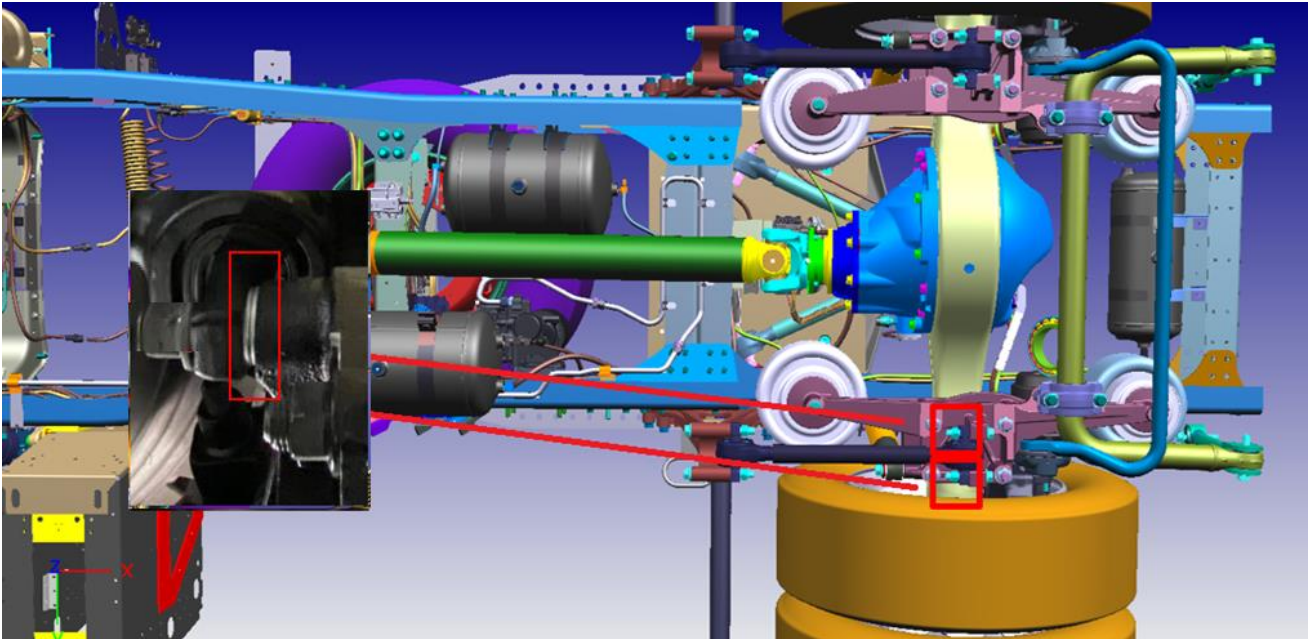
If axle rotation as in illustration below;



- Remove 2 x M18 bolts and place 2 pcs 9C46-5A602-AA washers as below and then tight bolts again. (Tightening Torque Value : 360 ± 40 Nm)



- Place 2 pcs 9C46-5A602-AA washer on torque rod's each assemble which is shown below.



Best Regards,
Ford Trucks Service Engineering