

**Heavy Commercial Vehicles**

Information bulletin to be circulated to:	Service Manager	Warranty Manager	Parts Manager	Master Technician	Service Consultant	BMIS
	✓	✓	✓	✓	✓	✓

<b>Subject</b>	Caster Shim Implementation
<b>Variant</b>	F-MAX
<b>Abstract</b>	Caster shim application for F-Max vehicles which is decided to apply for preventing drive pulling/deviation issues.

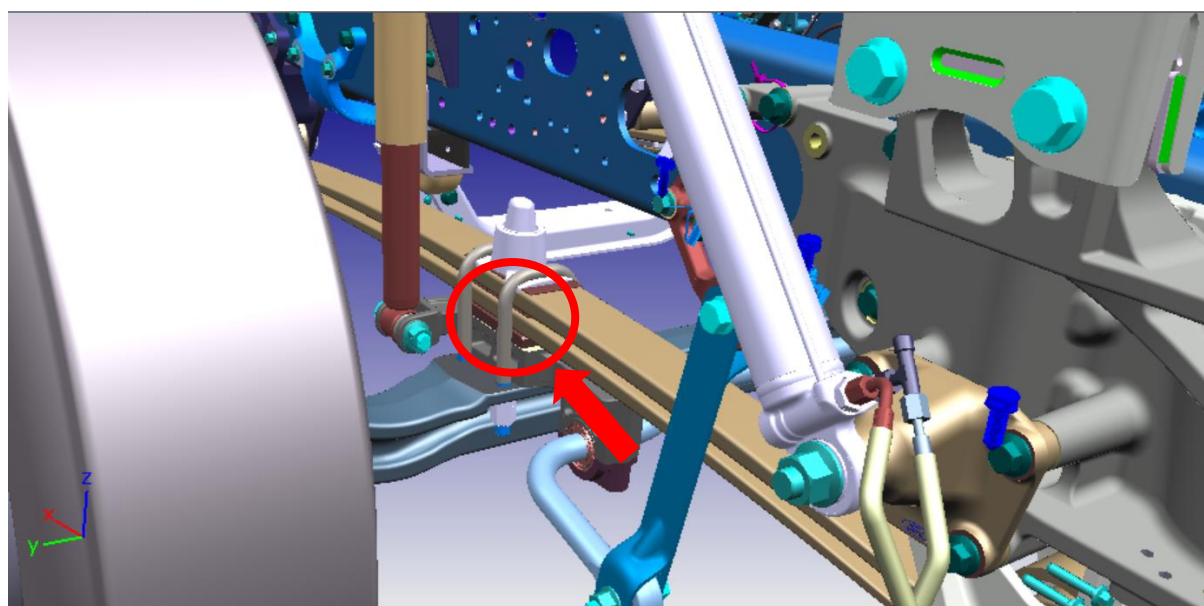
**Parts to be Used**

Part Number	Part Name	Number of Parts
RC46 - 5A300 - EA	Caster Shim	1

**Labour \***

Labour Code	Labour Name	Duration (hour)
24C020 D	Radiator Hoses R/I	0.60
25C097 E	F-Max Caster Shim Implementation	1.00
29C012	Vehicle Test Drive	0.50
13C027	EHPAS Calibration	0.05

**\* You can claim the completed operations according to labor list above.**



## **Service Application**

This workshop manual is related with caster shim application for F-Max vehicles which is decided to apply for preventing drive pulling/deviation issues.

Please follow the procedure which described below when you need to put caster shim between front spring and rear stabilizer plate.

### **ATTENTION !**

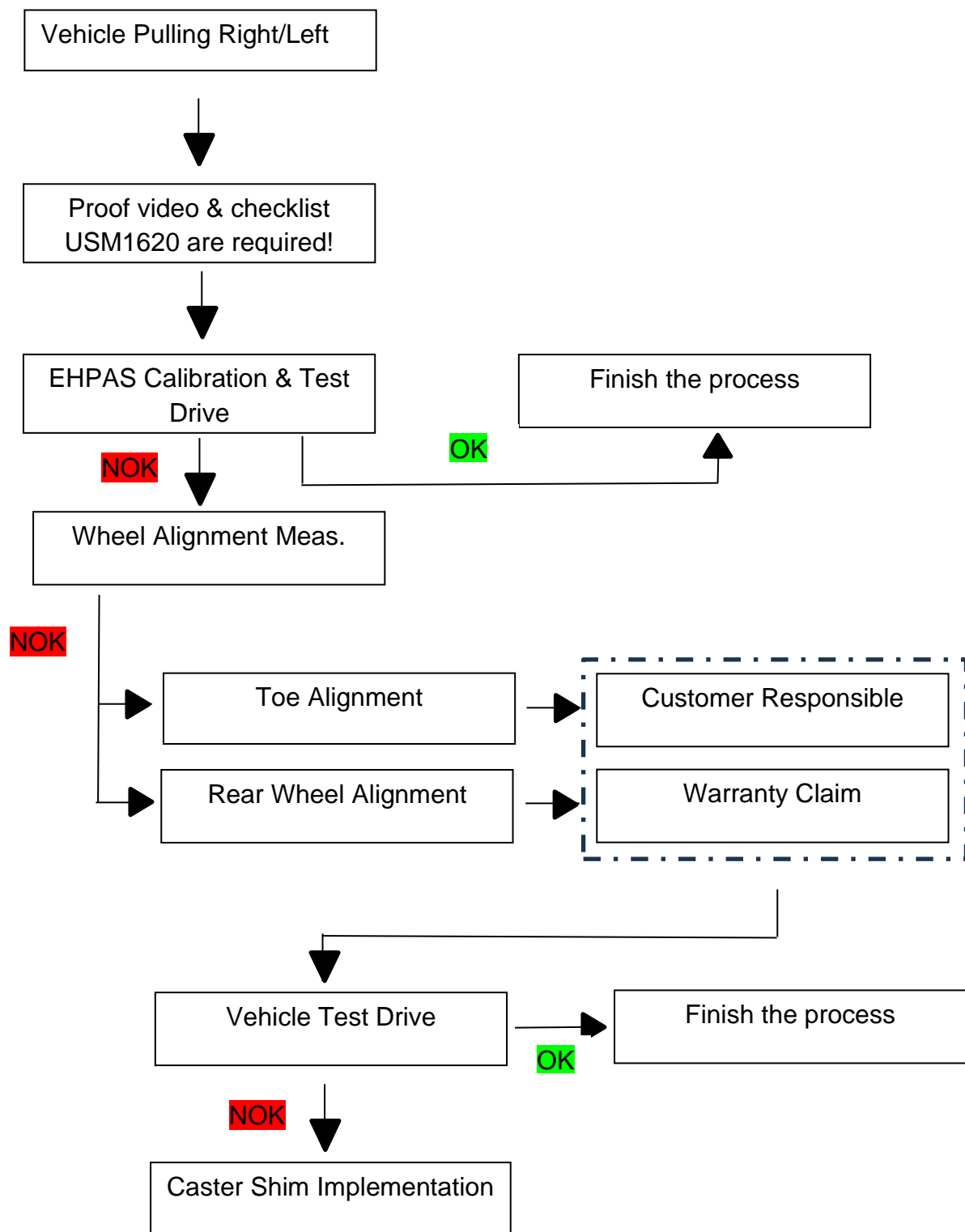
1 ) If customer complainments are existing please check front & rear wheel alignments with using **“TSB-ENHCV-0822-Wheel Alignment Process and Specification”** bulletin before than caster shim application. Customer responsible with wheel alignment measurements.

2) If front wheel alignment is not in tolerances, please adjust front wheel alignment according to **“TSB-ENHCV-0822-Wheel Alignment Process and Specification”** bulletin. Customer responsible with front wheel alignment adjustment.

**\*\* EHPAS Calibration must be done for vehicles which were produced before than 09/2024!**

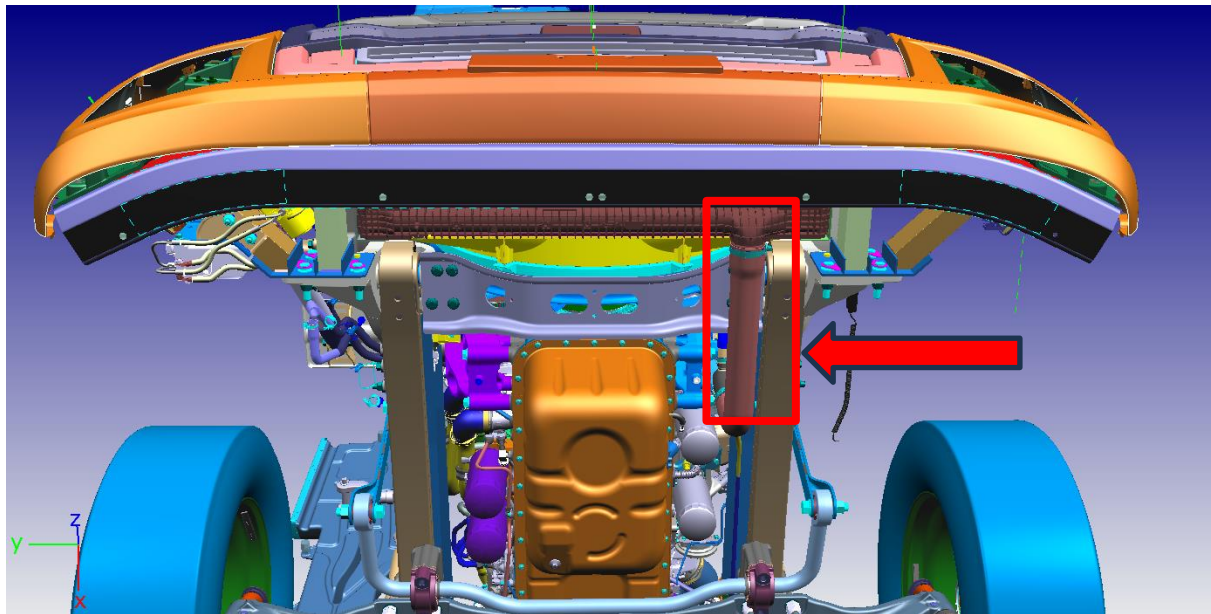
3) If rear axle rotation is not in tolerances (crab angle tolerance) please adjust according to **“TSB-ENHCV-0920 C2AS Rear Axle Rotation Adjustment” & TSB-ENHCV-0924-C4AS Rear Axle Rotation Adjustment** bulletin and make warranty claim, Ford Otosan responsible with rear axle adustment.

## Flow Chart of Process:



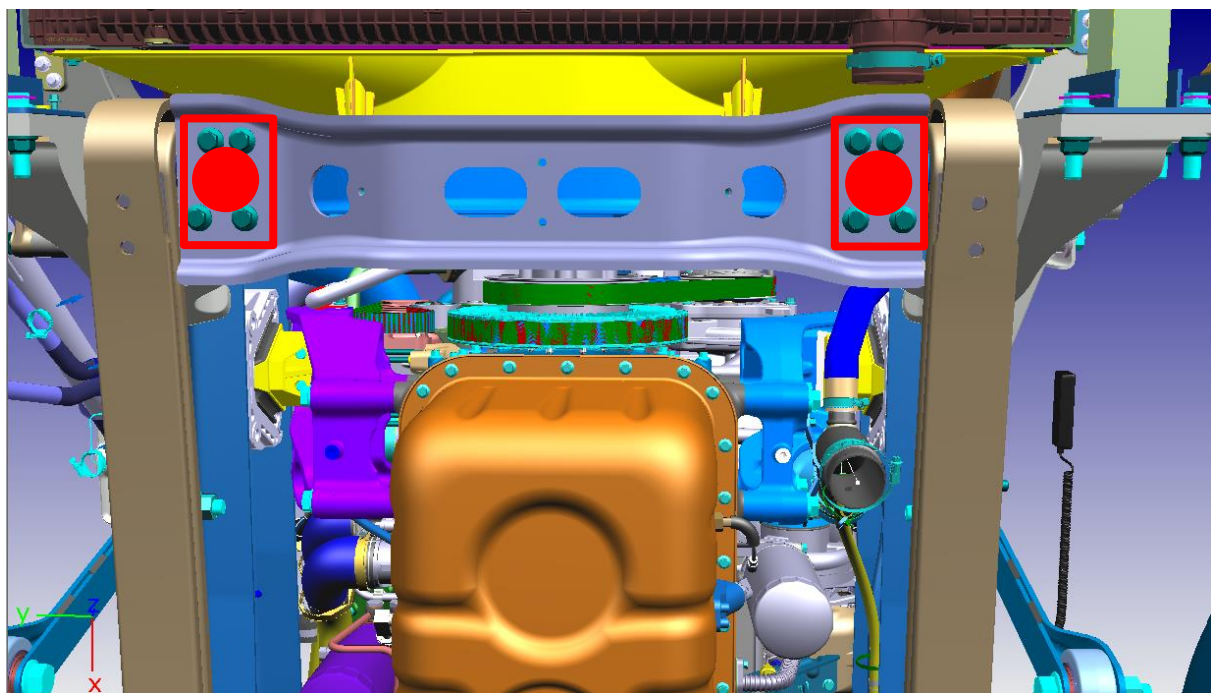
### Remove / Install Steps:

1) First, disassemble RAD LWR HOSE (8286) for lifting by jack (**Labor Code : 24C020 D**)



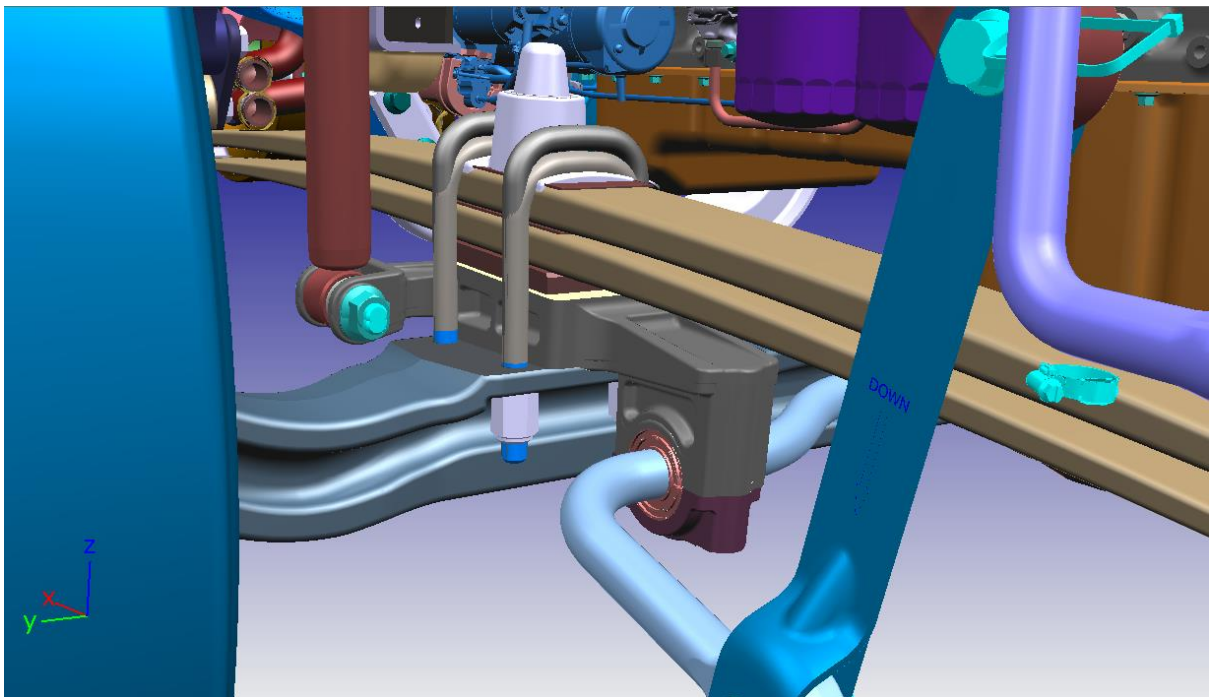
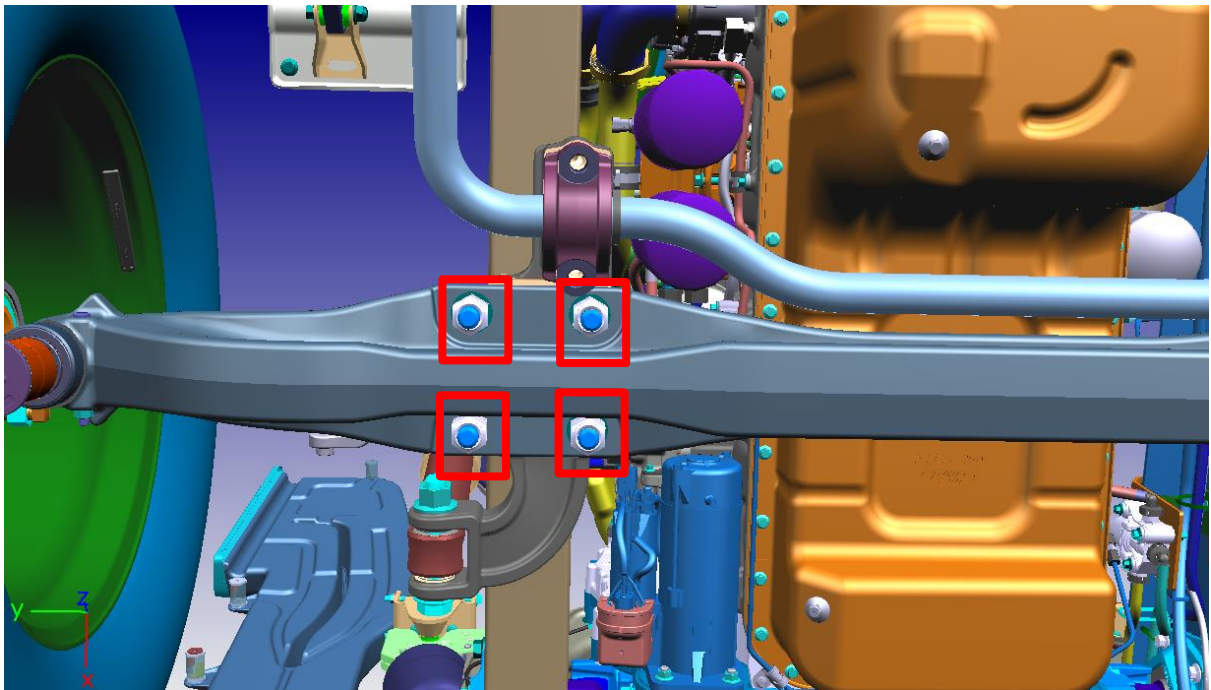
2) Place jacks with sufficient capacity under the indicated location below the chassis make sure jack sit properly and then lift the vehicle slightly.

(Please don't remove jacks from chassis which are marked points. Only marked points are durable enough.)

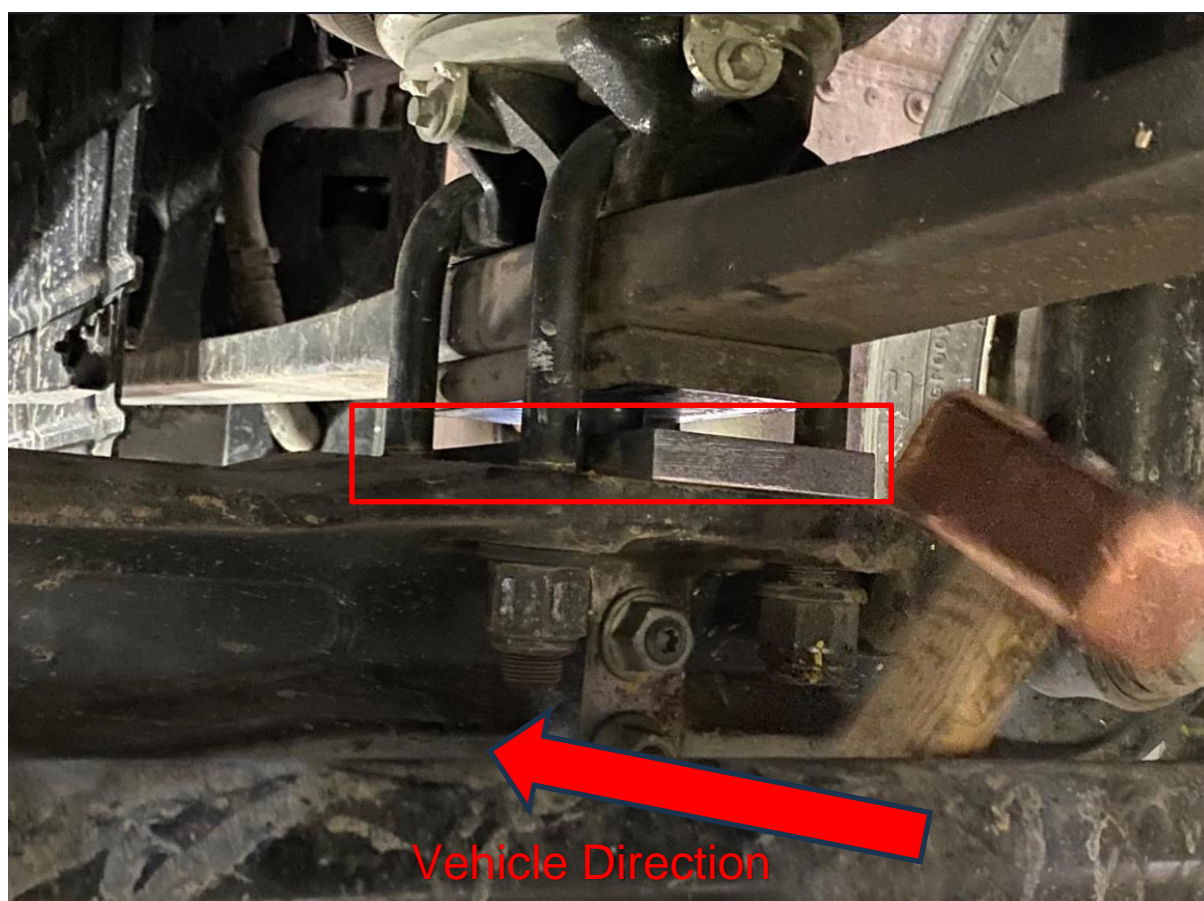
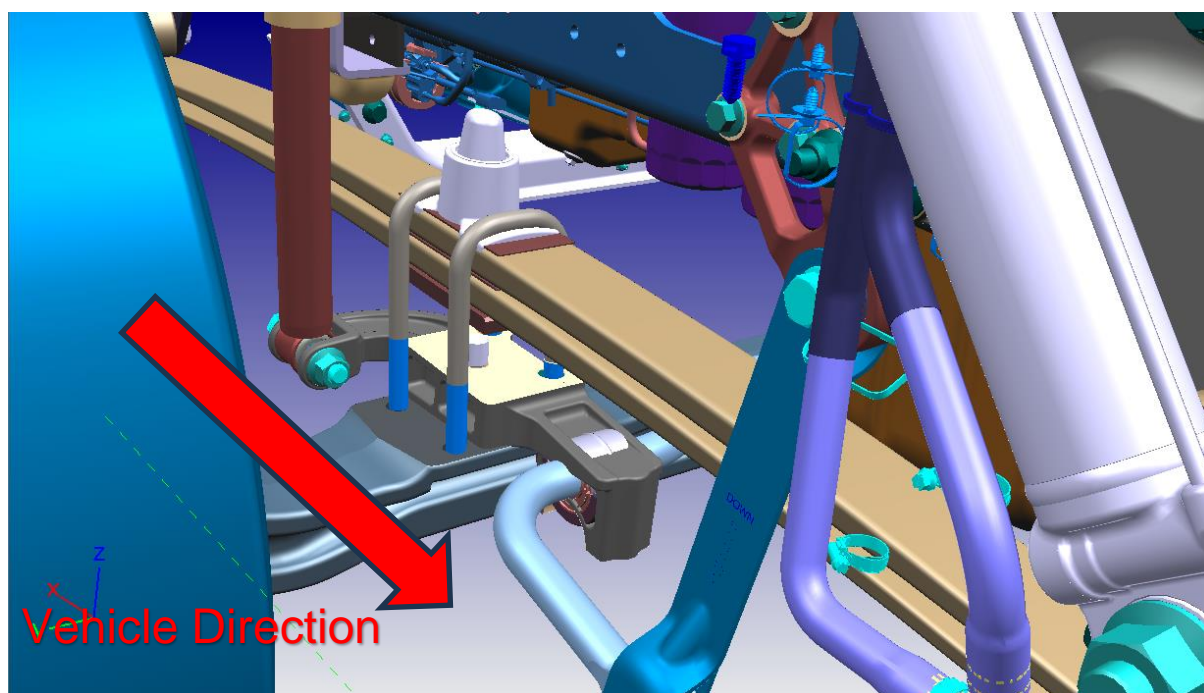




**3)** Please loosen 4 x M20 U-bolts of the suspension spring and slightly lift the vehicle with jack for providing make clearance to put caster shim.



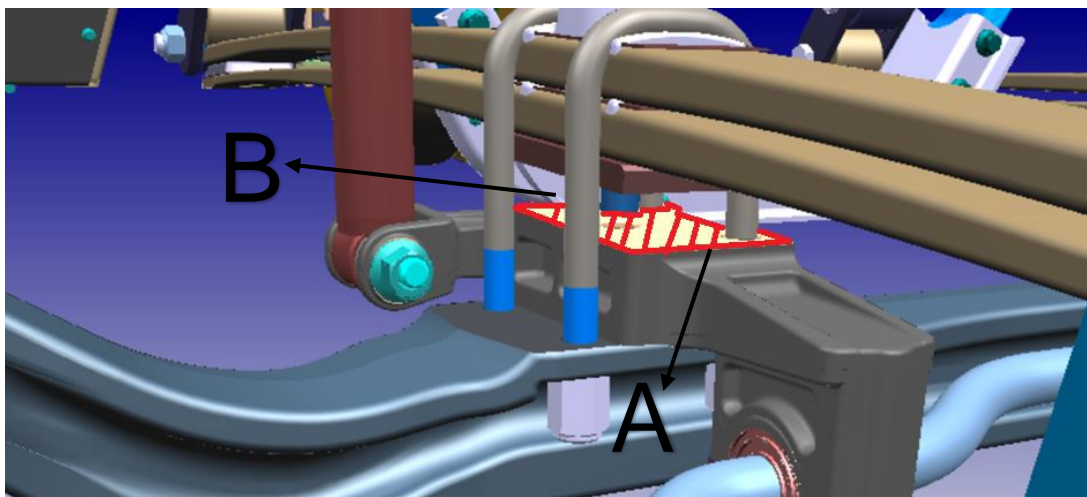
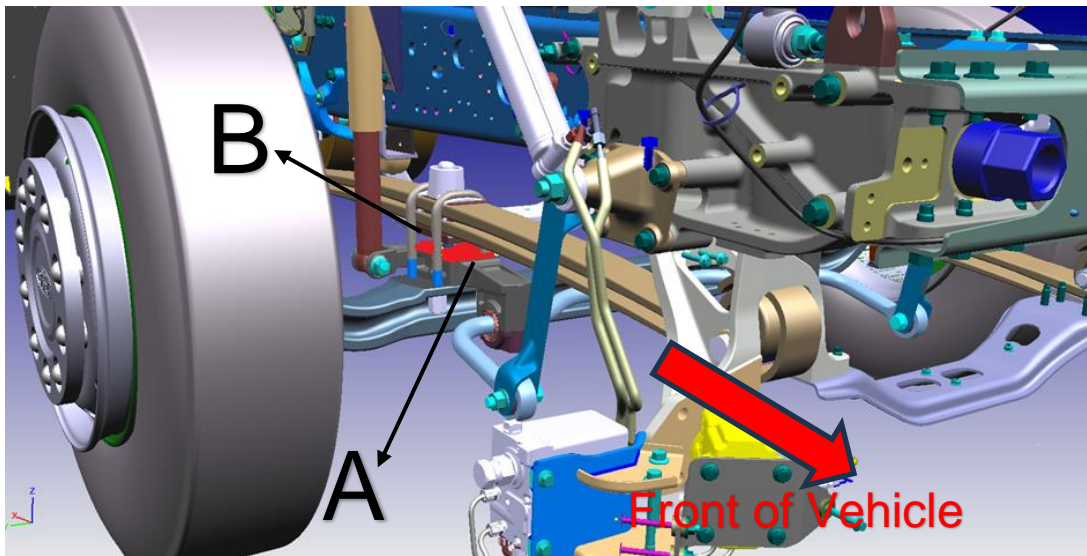
4) Install caster shim between **RIGHT – FRONT SPRING (5310)** and **RIGHT - REAR PLATE STABILIZER (5B493)** by using hammer.



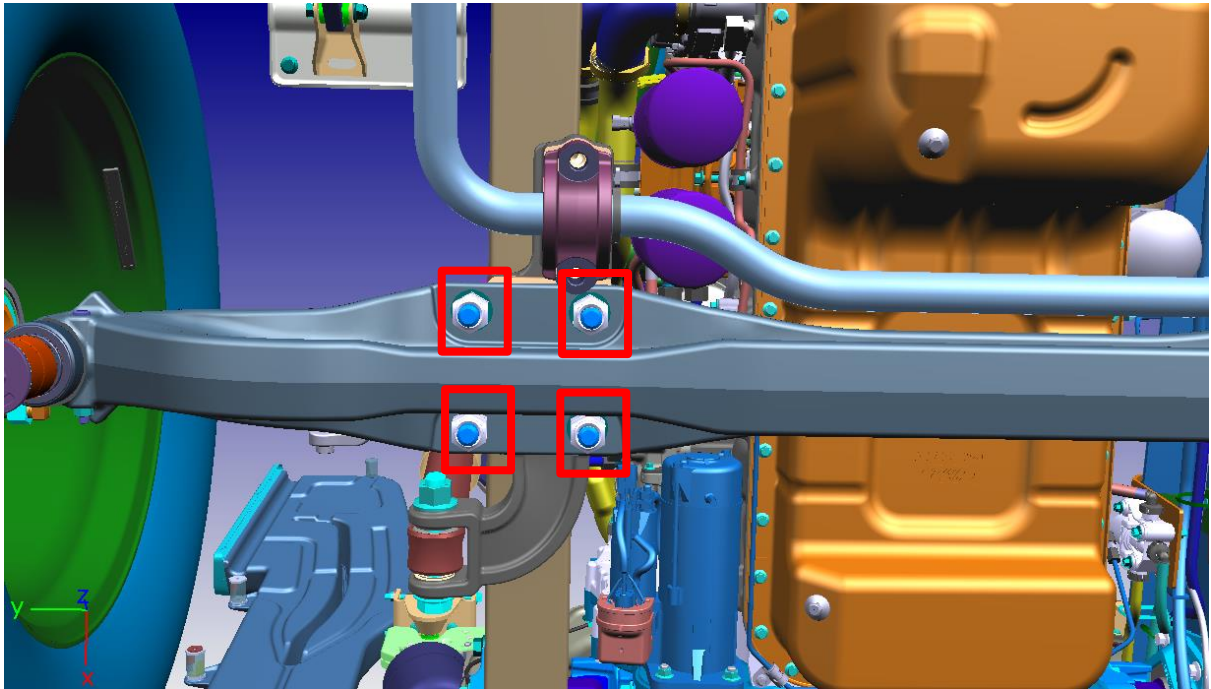


**Attention !**

Please install caster shim according to defined directions.



- 5) Drop down vehicle with jack slightly for tightening U-bolts.
- 6) Tighten 4 x M20 U-bolts of the suspension spring to 375 Nm.



**Note:** The caster shim implementation process does not effect to vehicle's wheel alignment.  
**Do not apply wheel alignment process again.**

Best Regards,  
Ford Trucks Service Engineering