

## Field Service Application

REFERANS: FSA 202513

DATE:11.08.2025

SUBJECT: Gen 2.0 SCR Harness Touch Condition

FSA Type: Customer Notification

### Heavy Commercial Vehicles

Circulate to:	Service Manager	Warranty Manager	Parts Manager	Master Technician	Service Consultant	BMIS
	✓	✓	✓	✓	✓	✓

<b>Subject</b>	SCR Harness Touching To Interdar Cooling Bracket
<b>Model</b>	F-Max & F-Line GEN2 Retarder / Interdar Vehicles
<b>Summary</b>	14398 and 12A690 ECU harness branch touching or closing to interdar cooling bracket. This causes harness damage. Convolute tubing and tape will be applied to protect and prevent contact areas for damage.

**Issue Summary:** Due to close packaging between interdar bracket and ECU branch of the 14398 chassis harness , F-Max & F-Line GEN2 Retarder/Interdar vehicles' 14398 and 12A690 ECU harness branch touching or closing to interdar cooling bracket. This case causes harness damage. Gaf application will be performed to the relevant harness to prevent damage risks due to contact.

Part No	Part Name	Usage Quantity
GC46 9A288 AA	Insulator GAF	0,33
FC46 1A303 AA	Coroplast 837X Tape	0,2
8C46 2D218 AA	Plastic Strap	2

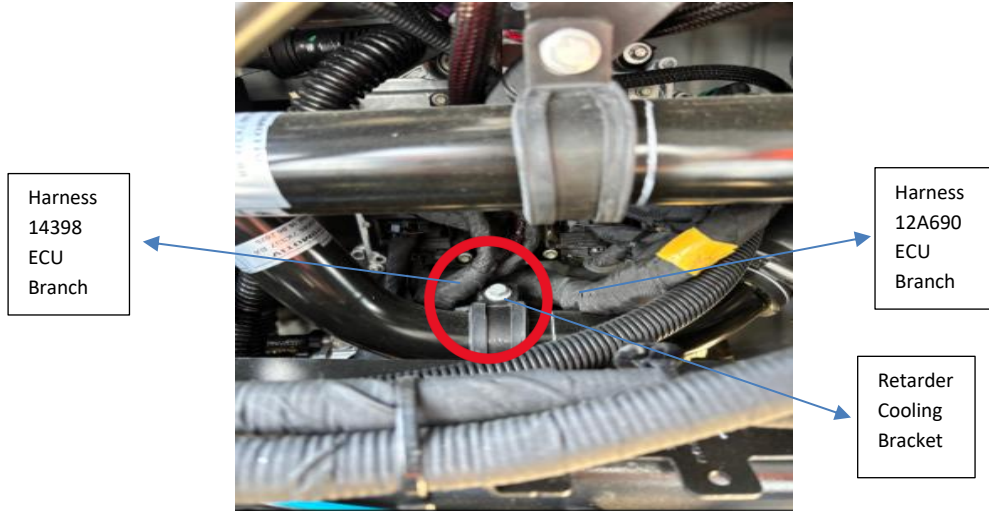
### Labor Code:

EWNG Code	Description	Labor Time (hr)
FSA 202513	Gen 2.0 SCR Harness Gaf Addition according to FSA 202513	0,35

**Work Instructions:** To prevent the issue described below convolute tubing, tape and strap will be applied to 14398 and 12A690 ECU harness branch. The following steps must be followed for the implementation.

### Service Steps For F-Max;

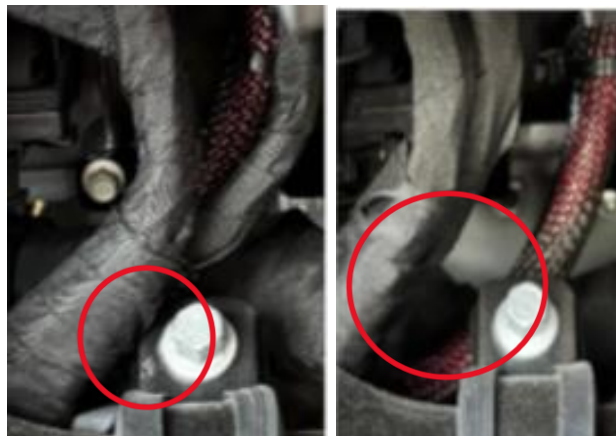
1. The cabin will be tilted.
2. Check the marked area on the engine on the passenger side.



Zoomed view of the area mentioned in Step 2:



3. In the harness positioning mentioned in Step 2:  
If the relevant harness is in contact with the bracket or appears as shown in the photo below like touching or approaching to bracket, proceed to the next step for the definition of corrective actions.  
(Vehicles with approaching scr lines have potential close contact and should also be included to avoid future risk.)



Touching

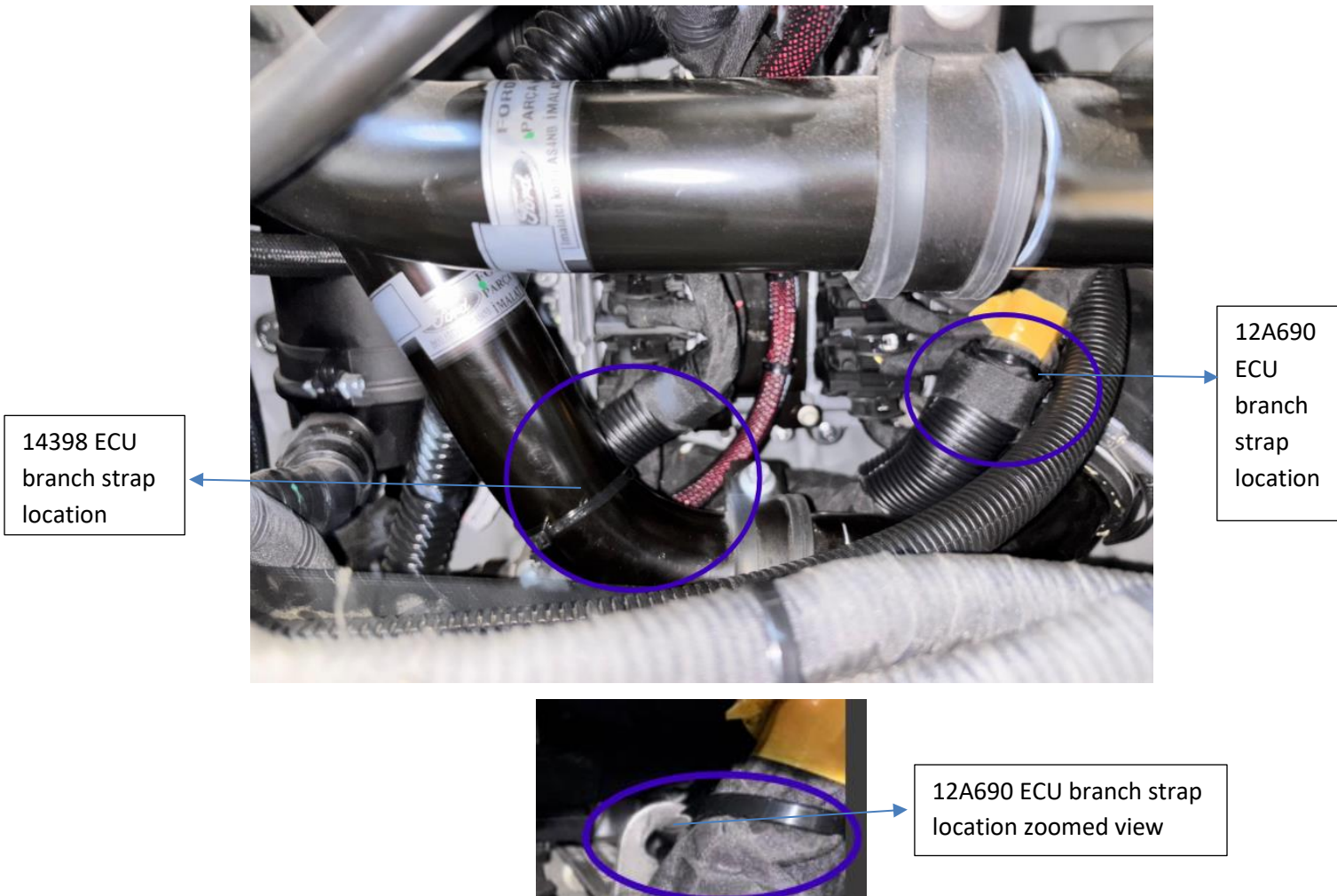
Approaching

4.

- Cut the convolute tube with part number **GC46-9A288-AA** to a size sufficient to cover the contact area (cutting must be done using side cutters or scissors).
- Wrap the cut convolute tube around the area where the harness contacts the bracket.
- After applying the convolute tubing, to prevent it from slipping off, cut a section of cloth tape **FC46-1A303-AA** (used on the harness) and tightly tape it over the wrap (cutting must be done using side cutters or scissors).
- After these steps are completed, the area should appear as shown in the photo below.



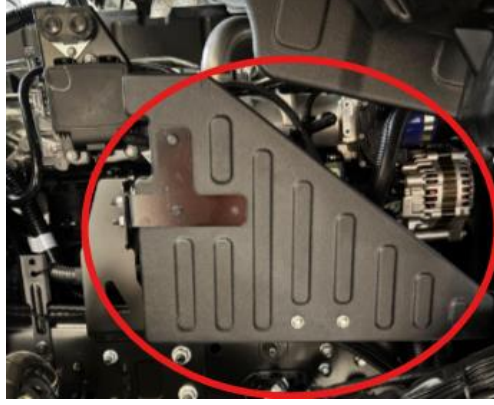
5. The 14398 and 12A690 convoluted tubed & taped wiring harness ECU branch will be strapped with plastic straps (**8C46-2D218-AA**) and moved away from the bracket by connecting them to the marked areas. The 14398 branch is strapped to the lower intarder hose, and the 12A690 branch is strapped to the ECU bracket (GC46-14A206-A\*) as shown below:



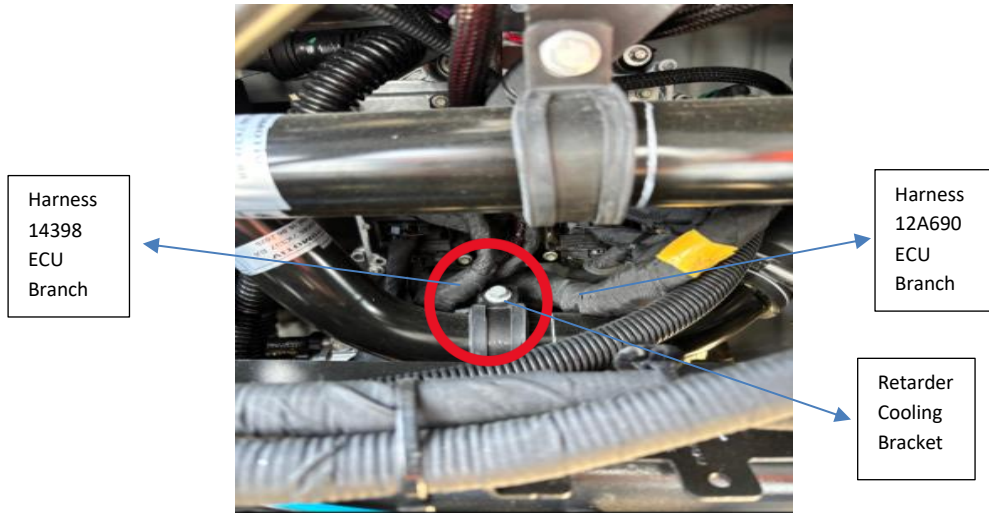
6. Once all procedures are completed, the cabin is closed, and the vehicle is returned to its original state.

**Service Steps For F-Line;**

- 1) Tilt the cabin.
- 2) Remove the part marked below – GC46 6M002 EA (Cover plate close to the ECU).



- 3) Check the marked area on the engine on the passenger side.



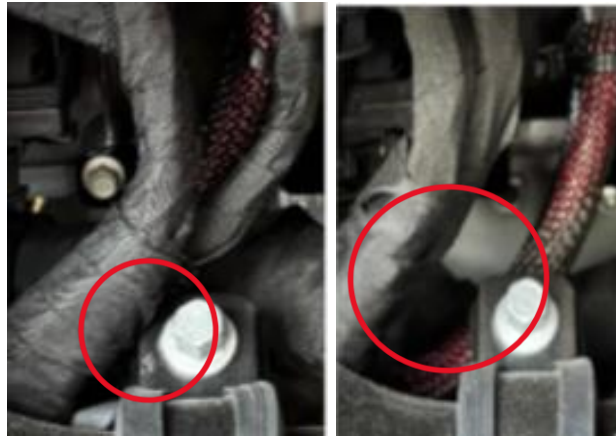
Zoomed view of the area mentioned in Step 2:





4) In the harness positioning mentioned in Step 2:

If the relevant harness is in contact with the bracket or appears as shown in the photo below like touching or approaching to bracket, proceed to the next step for the definition of corrective actions. (Vehicles with potential close contact should also be included to avoid future risk.)



Touching

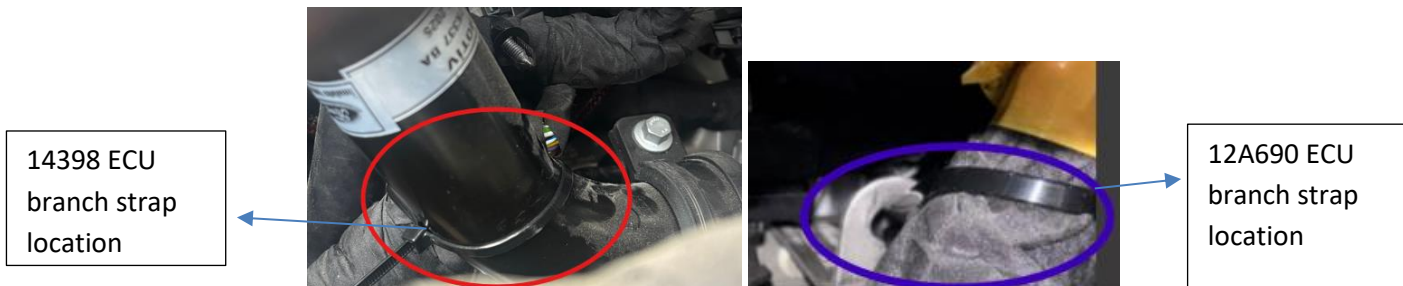
Approaching

5)

- Cut the convolute tupe with part number **GC46-9A288-AA** to a size sufficient to cover the contact area (cutting must be done using side cutters or scissors).
- Wrap the cut convolute tupe around the area where the harness contacts the bracket.
- After applying the convolute tubing, to prevent it from slipping off, cut a section of cloth tape **FC46-1A303-AA** (used on the harness) and tightly tape it over the wrap (cutting must be done using side cutters or scissors).
- After these steps are completed, the area should appear as shown in the photo below.



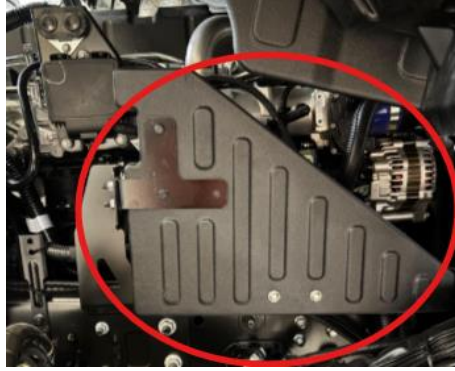
- 6) The 14398 and 12A690 convoluted tubed & taped wiring harness ECU branches should be strapped to move away from the bracket by connecting them to the same parts as FMAX described above by the plastic strap (**8C46-2D218-AA**).



14398 ECU  
branch strap  
location

12A690 ECU  
branch strap  
location

7) Re-assemble the removed part marked below - GC46 6M002 EA.



8) Once all procedures are completed, the cabin is closed, and the vehicle is returned to its original state.

**Important Note:** This Field Service Action (FSA) covers 387 vehicles also included in the recently published FSA 202514 (Gen 2.0 SCR Efficiency ECU Update). For these vehicles, both FSA procedures should be performed during the same service visit to prevent recalling the customer within a short time frame twice.

Best regards,

Ford Trucks Service Engineering